

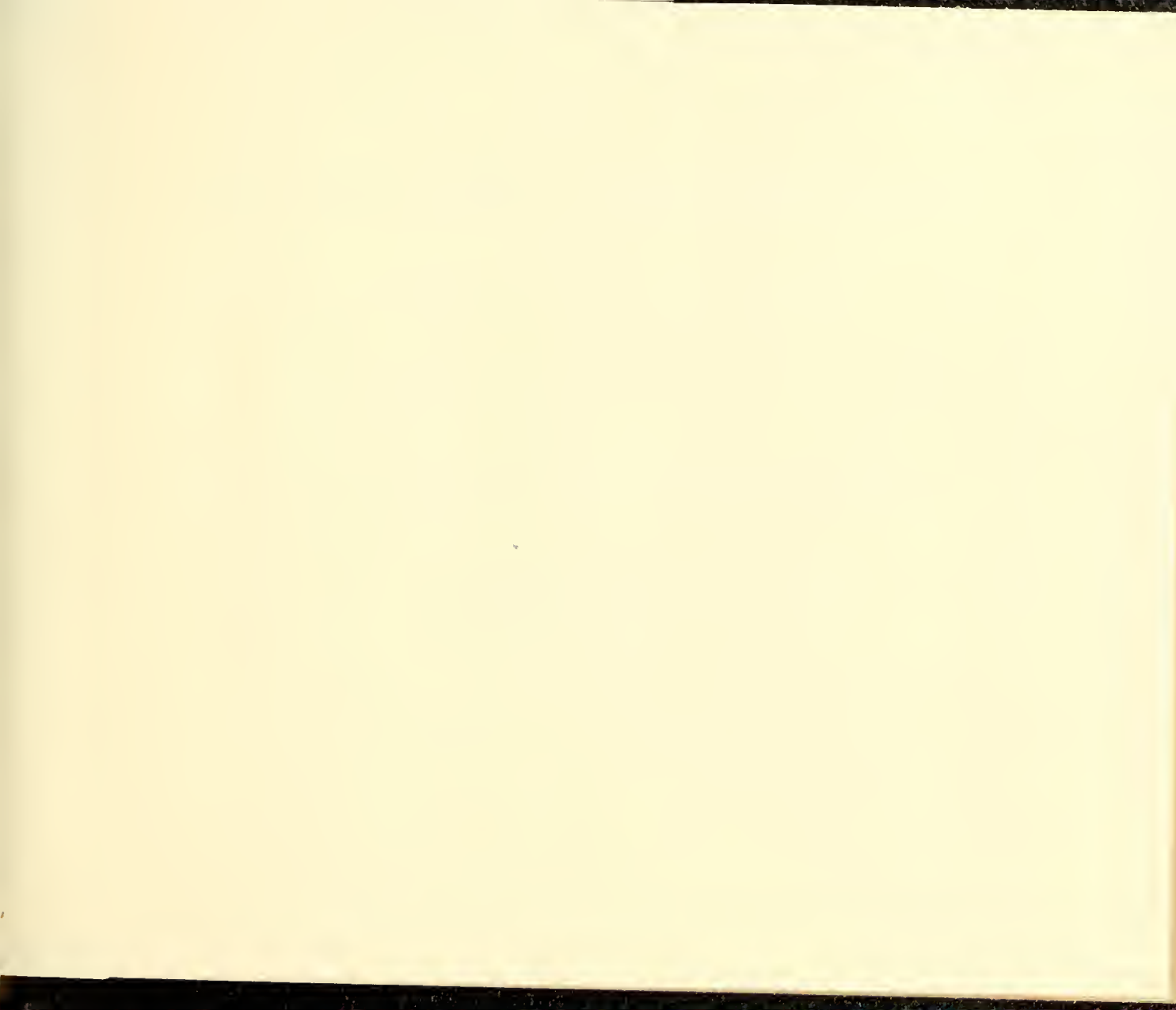
T 500

.C1 A5











F263  
359

# AMERICAN PRODUCTS

---

Illustrated Columbian Exposition.

---

SUCCESSFUL AND ENTERPRISING

MANUFACTURERS & DISTRIBUTORS.

---

Entered according to Act of Congress, in the year 1894, by  
J. D. SHELDON & CO.,  
in the office of the Librarian of Congress at Washington.

---

J. D. SHELDON & CO., Publishers,  
54 & 56 Franklin St., New York.

---

1894.

J. D. Sheldon  
New York

LIBRARY OF CONGRESS  
AUG 2 1894  
WASHINGTON

6702

— R —

T 500  
CIA 5



## Introduction.

WHATEVER views may be entertained in relation to tariff legislation, it is very generally conceded, that (under any probable conditions) a larger distribution of American products through foreign markets will become an absolute necessity. The greater the prosperity, the larger the output.

Statistics for the past year show a substantial increase both gratifying and encouraging.

The first issue of "American Products" with its significant title and suggestive illustrations is respectfully commended to the progressive and enterprising manufacturer as well as the appreciative buyer.

Subsequent issues will be published annually, embracing such lines of illustrations as may be of mutual interest and value.

GARNER & CO.

2, 4, 6, 8 & 10 WORTH STREET,  
NEW YORK.

---

The Largest Manufacturers

of

PRINTED FABRICS in the World.

---

SPECIAL LINES FOR EXPORT.

**7** MEDALS AWARDED AT THE  
COLUMBIAN EXPOSITION 1893.

7 Medals at New Orleans 1885;

2 Gold Medals at Paris 1889,

# INDEX TO ADVERTISERS.

	Page		Page
Amoskeag Mfg. Co. ....	48	Wm. H. Jackson & Co. ....	40
American Net & Twine Co. ....	30	Joy, Langdon & Co. ....	72
E. Aspinall. ....	56 & 96	Henry C. Kelley. ....	84
Barbour Bros. Co. ....	24	J. H. Lane & Co. ....	8
A. E. Barnes & Bro. ....	92	Longman & Martinez. ....	88
C. R. Bailey. ....	88	Thomas Martin. ....	84
Bernheimer & Walter. ....	80	Andrew McLean & Co. ....	78
Jacob S. Bernheimer & Bro. ....	86	Miller & Coates. ....	54
Billings, King & Co. ....	38	Nevius & Haviland. ....	50
Bissell Carpet Sweeper Co. ....	52	Peters & Calhoun Co. ....	58
Bliss, Fabyan & Co. ....	6	F. O. Pierce & Co. ....	30
Borden & Lovell. ....	52	Richardson & Boynton Co. ....	94
A. Bushee & Co. ....	88	V. Henry Rothschild & Co. ....	68
Catlin & Co. ....	74	Russell & Erwin Mfg. Co. ....	44
Coffin, Altemus & Co. ....	18	Schoverling, Daly & Gales. ....	82
Martin I. Cooley. ....	66	Short, Nerney & Co. ....	88
James W. Cooke & Co. ....	64	Wm. Simpson, Sons & Co. ....	16
Creighton & Burch. ....	20	Smith, Worthington & Co. ....	70
F. W. Devoe & C. T. Raynolds Co. ....	26	Spencer Optical Mfg. Co. ....	90
John Farnum & Co. ....	72	Edwin B. Stimpson & Son. ....	10 & 34
Fletcher Mfg. Co. ....	46	Souweine Mfg. Co. ....	98
F. Kroeber Clock Co. ....	90	Tefft, Weller & Co. ....	62
Garner & Co. ....	4	The J. L. Mott Iron Works. ....	42
John S. Gage. ....	28	Townsend & Yale. ....	22
John A. Gifford. ....	52	C. C. Tyler. ....	84
W. H. Gray. ....	32	Union Wadding Co. ....	12
Haydenville Mfg. Co. ....	36	United States Net & Twine Co. ....	64
Headley & Farmer Co. ....	60	M. Weil. ....	74
Horton, Angell & Co. ....	88	Clarence Whitman & Co. ....	14

BLISS, FABYAN & CO.

Commission Merchants,

NEW YORK.

BOSTON.

PHILADELPHIA.

**Agents for the Sale of Domestic**

Cotton Dry Goods for Export

—INCLUDING—

*Drills, Jeans, Sheetings, Turkey Red Table Damask,  
White Bed Spreads, Denims, Ducks, Stripes, Checks,  
Tickings, Cheviots, Underwear, Hosiery, Indigo and  
Shirting Prints, &c., &c.*



BIRD'S EYE VIEW.

J. H. LANE & CO.,

**110 Worth St., New York.**

**24 Kingston St., Boston.**

COTTONS FOR EXPORT.

**DUCK, DRILLS,**

**SHEETINGS, YARNS,**

SOLID PRINTS, BLEACHED COTTONS

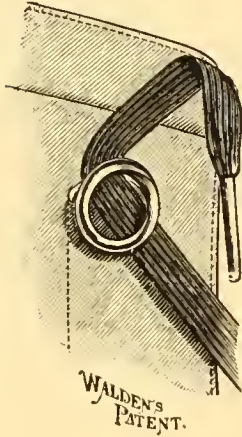
United States Government Duck.



U. S. GOVERNMENT.

# WIDE-AWAKE BUSINESS MEN

DO NOT WAIT TO ADOPT A NEW THING UNTIL THEIR NEIGHBOR HAS HAD IT FOR A SEASON SEND TO US AT ONCE FOR A MACHINE AND A FEW THOUSAND OF THE "COILS."



---

THEY IMPROVE THE APPEARANCE OF YOUR SHOES

And do not add to the cost.

---

MANUFACTURERS WHO ARE UP TO THE TIMES RECOGNIZE THIS AS A GOOD PRACTICAL FASTENER, AND HAVE ADOPTED IT.

---

IT IS NOT NECESSARY TO TIE A COW IN THE LACE WHEN THESE FASTENERS ARE USED.

WE HAVE THEM IN ANY COLOR.

---

SEND FOR SAMPLE TO

**EDWIN B. STIMPSON & SON,**

MANUFACTURERS OF

**SHOE MACHINERY AND FINDINGS,  
AND DEALERS IN SHOE STORE SUPPLIES,**

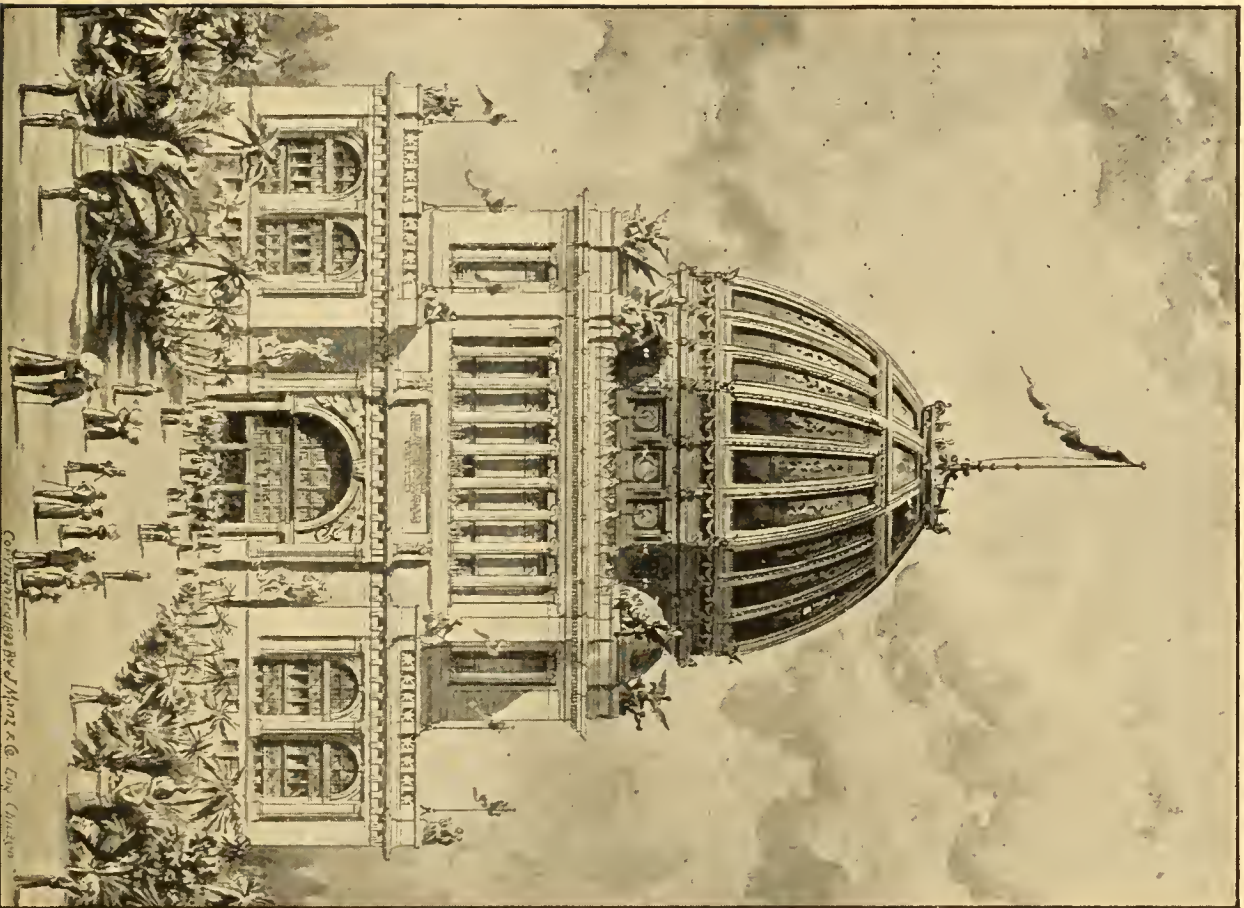
31 SPRUCE ST., NEW YORK, U. S. A.

Setting Machine.....\$15.00

Coil Lace Fasteners, per M.....\$2.50







CONSTRUCTED BY J. H. M. & Co. Eng. Chicago

Union Wadding Co.,

**Pawtucket, R. I., U. S. A.**

Manufacturers of

**WADDING and BATTING**

**New York Office and Salesroom:**

49 Leonard St., New York.

JOHN MAXWELL, Agent.



MANUFACTURERS.

# Pantasote

Used principally for  
Upholstery and Bag Work.

This material has the appearance and  
character of

**Leather**

Contains no rubber;  
will not become sticky, crack or smelt  
in the warmest climates.

# QUILTS

CROCHET AND  
MARSEILLES

We spin our own yarns and finish our  
own goods.

Patterns entirely new and original.  
Finish acknowledged to be unsurpassed.

# Lace Curtains

We are making 1,000,000 PAIRS  
yearly, in all widths.

Make and finish guaranteed  
equal to same grades of

Nottingham Goods.

---

CLARENCE WHITMAN & Co.,

*Selling Agents,*

39 & 41 Leonard St., - - NEW YORK.

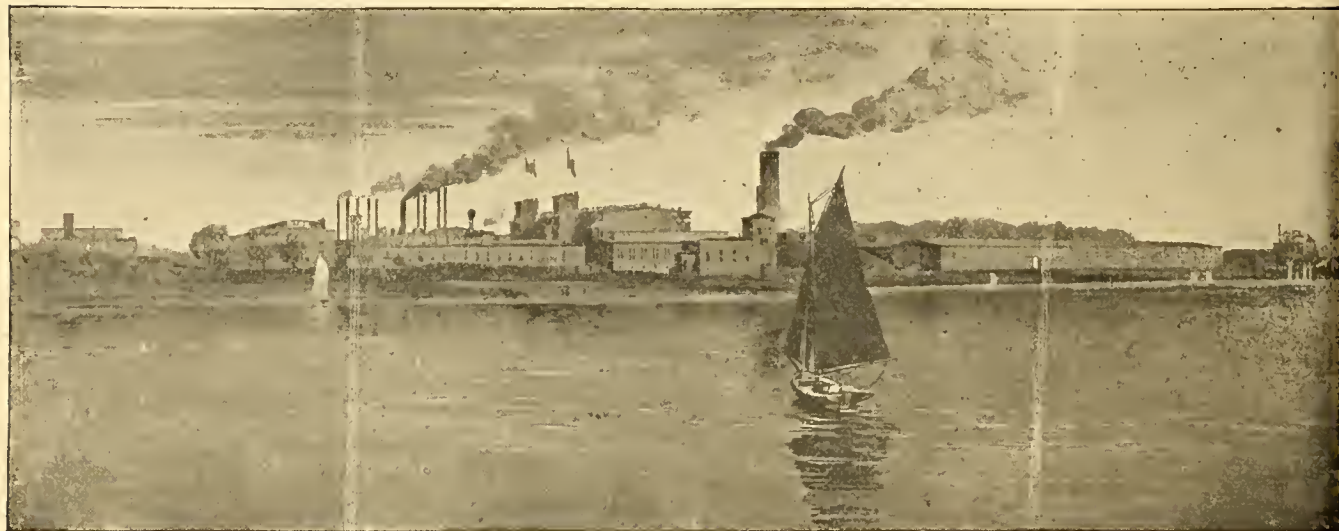


ELECTRICITY.

15

# WM. SIMPSON, SONS & Co.,

MANUFACTURERS AND SELLING AGENTS,



The Eddystone Manufacturing Co., Limited,

SOLID BLACK PRINTS,

SILVER GREY PRINTS,

MOURNING PRINTS, INDIGO BLUE PRINTS, ZEPHYR PRINTS,

**BERLIN PRINT WORKS.**

BERLIN SOLID COLORS,

BERLIN FOULARDS.



Copyrighted 1892 BY J. Marx & Co. Eng. Chicago.

MACHINERY HALL.

# COFFIN, ALTEMUS & CO.,

*Dry Goods Commission Merchants,*

NEW YORK.

PHILADELPHIA.

BOSTON.

BALTIMORE.

---

**Agents for**

**S. H. GREENE & SONS,**

Manufacturers of Washington Prints, Oil Robes, Dress Goods,  
Martha Washington Fancies, Imperial Pinks and Purples,  
Riverpoint Robes and Plain Oil Colors in various widths and qualities.

**FARR ALPACO CO.,** Serges and Italians.

**BARNABY MFG. CO.,** Fine Zephyr Gingham.

---

**BLEACHED MUSLINS, BROWN SHEETINGS,  
DRILLS, DUCKS AND OSNABURGS,**

—MANUFACTURED BY—

Williamsville Mfg. Co.

Slater Cotton Co.

Powhatan Mills,

Centreville Mills,

Atlanta Cotton Mills,

Forestdale Mfg Co.

Monahansett Mfg. Co.

Hamlet Mills,

Natchez Cotton Mills

Trion Mfg. Co.

Exposition Cotton Mills,

Crown Cotton Mills.

 **SPECIAL ATTENTION** paid to orders for the **Export Trade.**





MINES AND MINING.

White Goods.

INDIA LINONS, VICTORIA LAWNS,  
NAINSOOK CHECKS and STRIPES,  
LENO, LACE and SATIN CHECKS and STRIPES.

“Raven” Fast Blacks.

Fine Printed Dress Novelties.

Lace Curtains  
and Curtain Nets.

Guaranteed fully equal to Imported Goods in  
make and finish.

Curtains from lowest up to \$100 per pair.

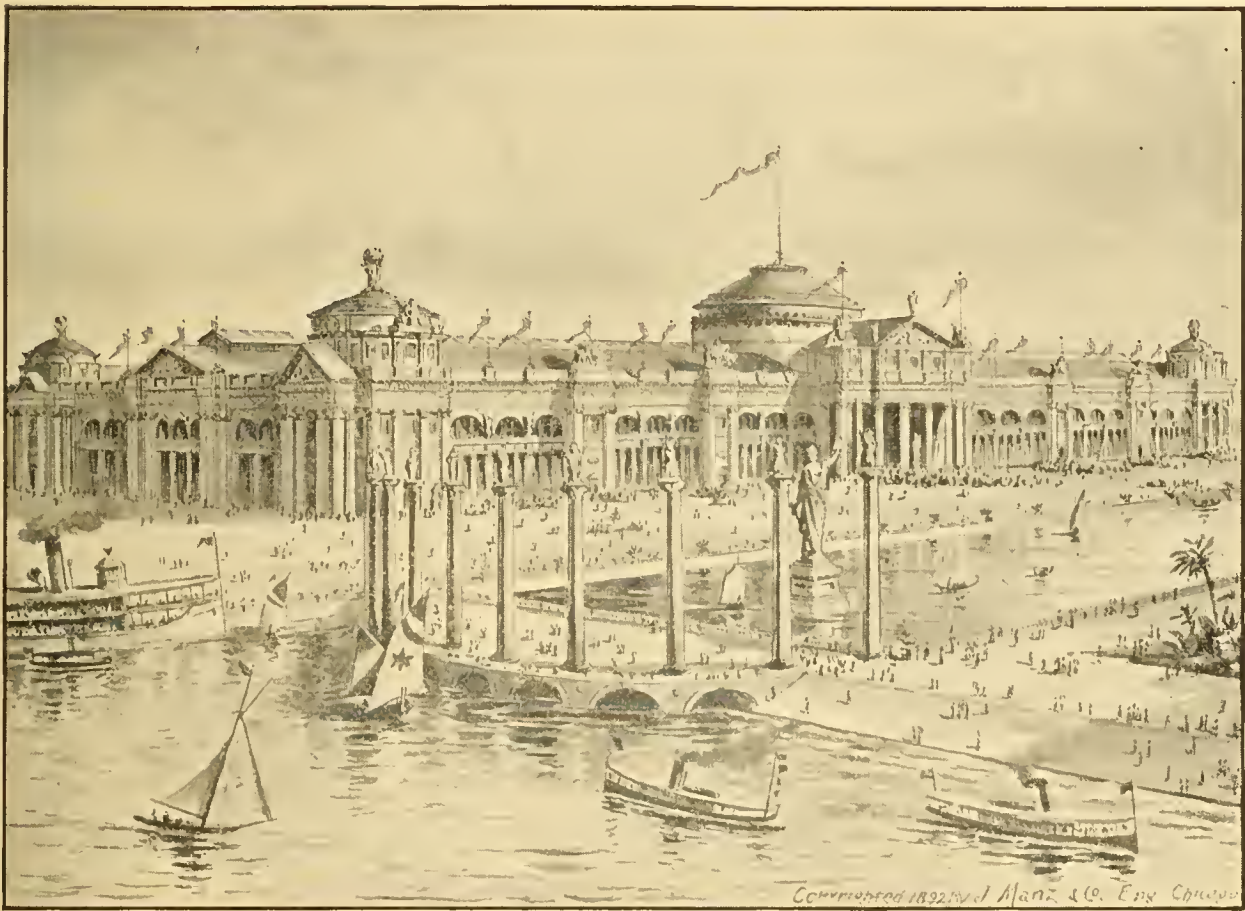
Nets from lowest up to 45 cts. per yard.

---

CREIGHTON & BURCH,

*Sole Selling Agents,*

10 & 12 THOMAS ST., - - NEW YORK.



Copyright 1892 by J. Manz & Co. Eng. Chicago

AGRICULTURAL.

21

# TOWNSEND & YALE,

345 & 347 BROADWAY, NEW YORK.

BOSTON, CHICAGO & PHILADELPHIA.

Manufacturers' Agents for the sale of the following lines of Merchandise suitable for the  
**EXPORT TRADE.**

## **Lawrence Manufacturing Co.**

**BROWN SHEETINGS, DRILLS, DENIMS, COTTON FLANNELS.**

## **Boston Manufacturing Co.**

**EXTRA WIDE BROWN AND BLEACHED SHEETINGS.**

## **Lawrence Manufacturing Co.**

**COTTON HOSIERY, Ladies' and Misses'.**

**COTTON SHIRTS & DRAWERS, Men's & Ladies' light weight.**

**COTTON HOSIERY, Men's, Ladies & Misses, Seamless.**

“ **SHIRTS & DRAWERS, Heavy & medium weight.**

“ **LADIES' JERSEY RIBBED UNDERWEAR.**

**WOOLEN HOSIERY, Men's, Ladies' & Misses' Seamless.**

“ **SHIRTS & DRAWERS, Medium & heavy weight.**

“ **LADIES' JERSEY RIBBED UNDERWEAR.**

“ **FANCY KNIT GOODS.**



HORTICULTURAL.

# BARBOUR'S STANDARD IRISH FLAX THREADS.

---

*For all purposes for which Linen Threads are used.*

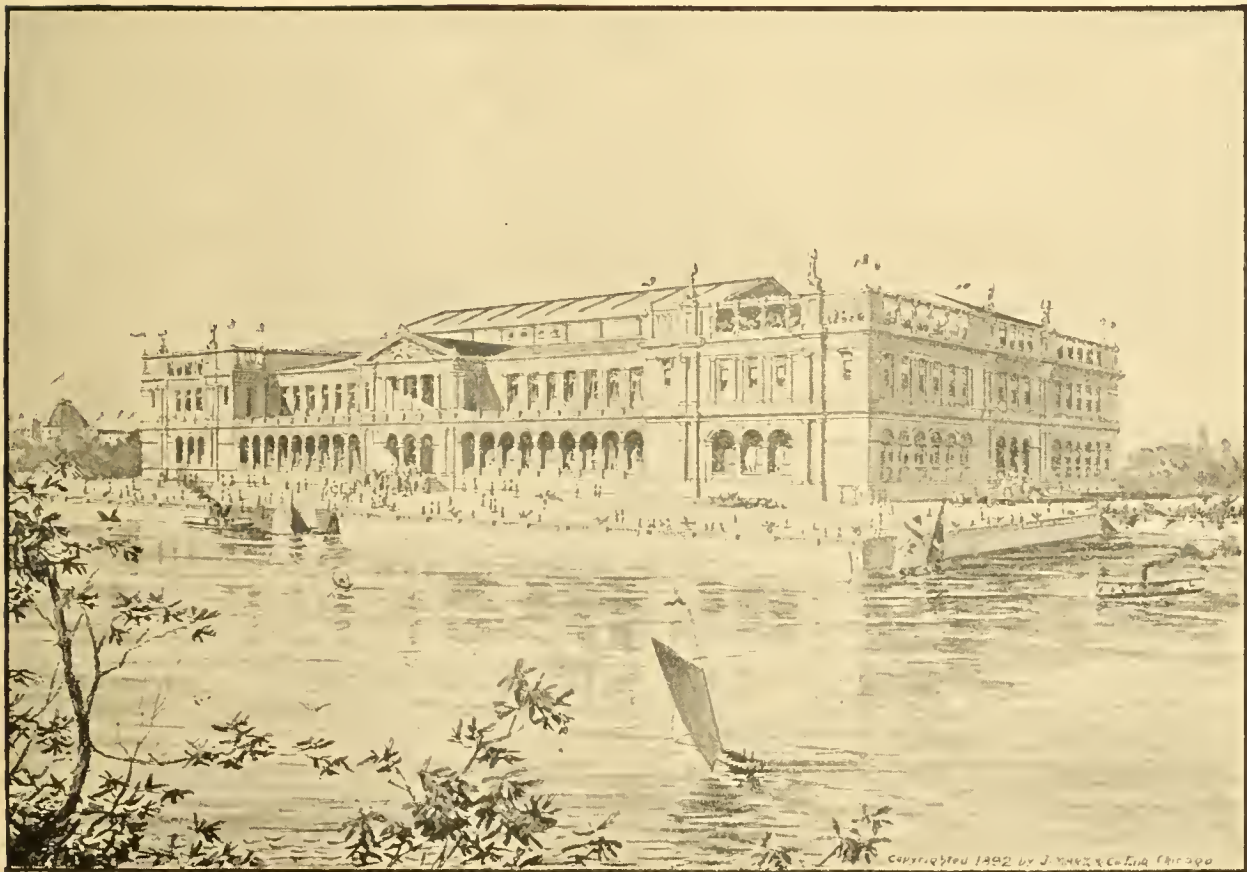
---

**SOLD IN ALL THE MARKETS OF THE WORLD.**

---

**NEW YORK OFFICE, 218 CHURCH ST.**

**American Factories, Paterson, N. J.**



Copyrighted 1892 by J. M. H. & Co. Ltd. Chicago

WOMAN'S

25

F. W. Devoc & C. T. Raynolds Co.,

Cor. Fulton & William Sts.,

NEW YORK.

---

MANUFACTURERS OF

*Varnishes, White Lead, Coach Colors,*

*Ready Mixed Paints, Fine Brushes,*

*Artists' Materials,*

*Civil Engineers' and Architects' Supplies,*

---

Goods packed specially for EXPORT.

—SEND FOR CATALOGUE.—





ART PALACE.

GAGE'S MOSQUITO CANOPIES.

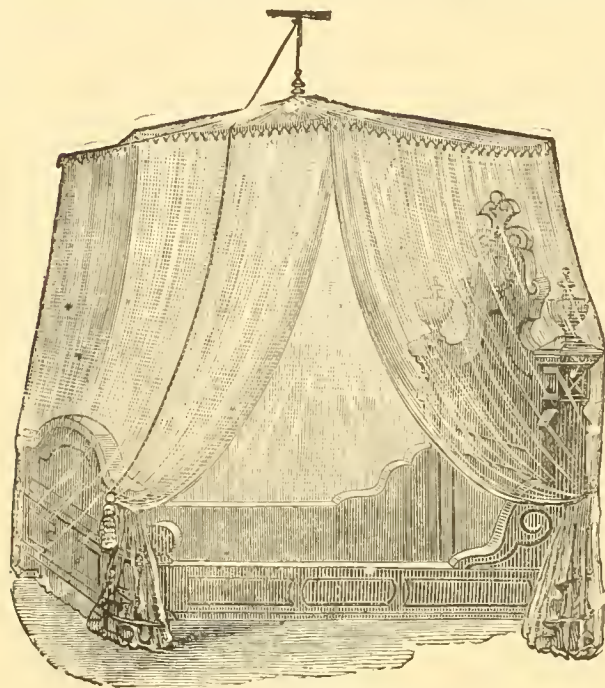
John S. Gage,

119 FRANKLIN ST., N. Y.

Manufacturer of

**MOSQUITO CANOPIES**

For EXPORT.



THE "LIVINGSTON."

We manufacture these Canopies from a very fine close mesh netting, especially adapted for the

**SOUTH AND CENTRAL AMERICAN TRADE.**

In ordering please specify the

**"LIVINGSTON,"**

as we manufacture several styles of Canopies, of which we will furnish prices and samples on application.



FORESTRY.

# F. O. Pierce & Co.

169 & 170 FULTON ST.,  
NEW YORK.

MANUFACTURERS

## Paints and Varnishes.

**SPECIALTIES:**

*Coach and Carriage Paints,  
Varnishes,*

*Ready Mixed Paints,*

*Lava Floor Paints,*

*Colors ground in oil,*

*White Lead and Zinc.*

## **ENAMELS**

FOR BATH TUBS, BEDSTEADS AND  
OTHER HOUSEHOLD PURPOSES.

SEND for CATALOGUE & SAMPLE CARDS.

# American Net and Twine Company

ESTABLISHED IN 1842.

Manufacturers of

## **COTTON FISH LINES, FISH NETTING, SEINES & TWINES.**

OUR GOODS HAVE AN ESTABLISHED RE-  
PUTATION FOR EXCELLENCE IN ALL  
THE FISHERIES OF NORTH AMERICA.

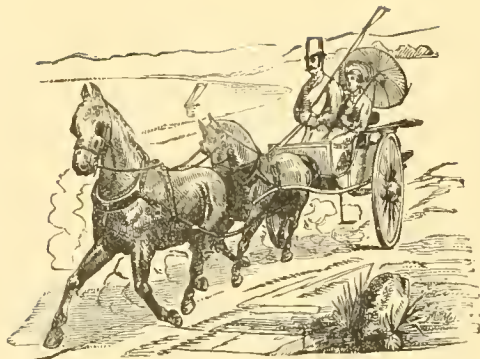
**THEIR ABSOLUTE RELIABILITY  
IS GUARANTEED.**

COMPLETE CATALOGUES AND SAMPLE  
CARDS FURNISHED ON REQUEST.



*Copyright 1900 by J. M. W. & Co. Eng. & Archts.*

FISHERIES.



WILLIAM H. GRAY,

20 & 22 WOOSTER ST.,

Between Canal and Grand Sts ,

**NEW YORK.**

---

CARRIAGES & HARNESS  
FOR EXPORT.



Copyrighted 1892 By J. Manz & Co. Engrs. Chi.

TRANSPORTATION-

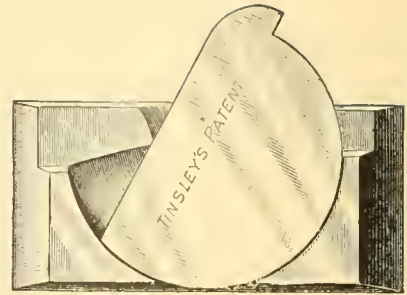
33

# PRINTERS!

## IT IS A SAVER OF TIME!!

AND THEREFORE A SAVER OF MONEY.

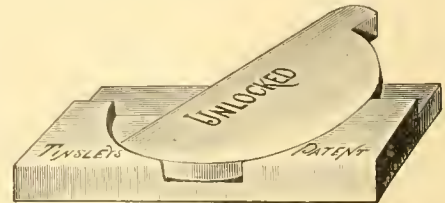
To say that the average Printer is not up to the times, would be a falsity; but to say that he has not reached the goal of perfection is true.—There are so many points where the craft is destined to improvement. The Midget is not an improvement, but it is a thoroughly new idea. It does away with an annoyance that has been in existence from way back—that of making some forms tight by forcing in leads. This Midget which we have is



MIDGET SAFETY QUOIN,  
**\$2.00 a Doz.**



**A very small Lock,**  
and will lock up a form in  
**A very small Space.**



You can put it anywhere in a form. To a practical Printer all this is evident—the Quoin speaks for itself. You should have it in your plant. No printing office complete without it.



**OCCUPIES THE SPACE OF  
3 NONPS.**

### SOME POINTS WORTH KNOWING:

Tapping it with the ever-present mallet fastens it.

Occupies no more space in length when locked than unlocked.

The proof of its safety is in the fact that when locked it rests on its corresponding flat surfaces.

It can be put anywhere in a form, as the space it occupies is so small that it is not noticeable in the printed job.

Unlike other quoins, the harder the substance it rests against, the better.

**EDWIN B. STIMPSON & SON, 31 Spruce St., New York, U. S. A.**



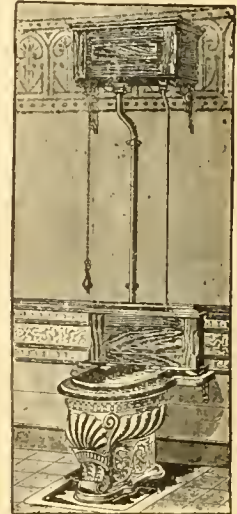
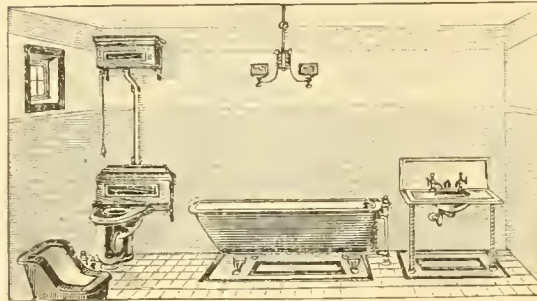
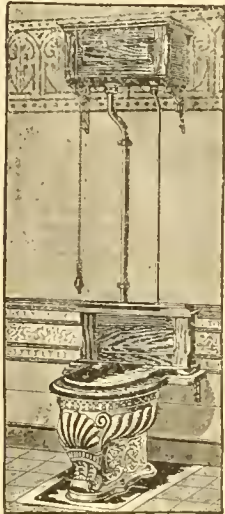


NEW YORK.

# HAYDENVILLE MANUFACTURING CO.

Manufacturers of

## Fine Fixtures for Bath Rooms



**73 BEEKMAN ST., NEW YORK.**



PENNSYLVANIA.

**BILLINGS, KING & CO.,** Incorporated,  
 MANUFACTURERS OF  
**Varnish and Paint Specialties of the highest grade,**  
**Main Office, 438 PEARL ST., NEW YORK.**  
 147 MILK ST., BOSTON, MASS.      Branches:      Foot of CASE AVE., CLEVELAND, OHIO.



**Finest Wearing Body Varnish,** will hold its lustre and not crack, making it the best carriage finishing varnish in the world. Price, \$6.00 per gallon.



An excellent varnish for exposed surfaces, either inland or at sea.  
 Price, - - \$1.00 per gallon.



This is the best dressing on the market for renovating carriage tops.  
 Price, - - \$2.25 per gallon.

A full assortment of sample cards with price list in English or Spanish will be sent free on application.



In small cans for general store trade. Pint cans, 20c. each.  
 1/2 pt. " 11c. "  
 Variety of shades.



Dries hard in one night, can be walked on next morning. Glossy and durable; adapted for vessel decks, piazzas, interior floors, etc.



We make a full line of coach and carriage colors in all the popular shades. Illustrated catalogue sent on application.



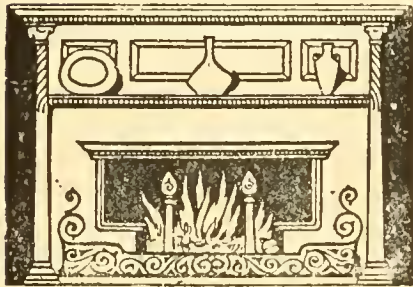
NEW JERSEY.

# WM-H-JACKSON-&CO

860 BROADWAY, - Union Sq. - 18th St., - NEW YORK.

Designers and Manufacturers of——

MANTELS, OPEN FIREPLACES,  
GRATES AND FENDERS.



Tiles, Marbles

—AND—

Ceramic Mosaics

For Walls and Floors.

**Artistic Wrought Metal Work for Interiors.**

**HOUSEHOLD ART GOODS.**

*J&C* ESTABLISHED OVER 65 YEARS. *J&C*

FOUNDRIES AND SHOPS, EAST 28TH & 29TH STS., 2D AVE.



DELAWARE.

# THE J. L. MOTT IRON WORKS,

84 to 90 Beekman St., New York.

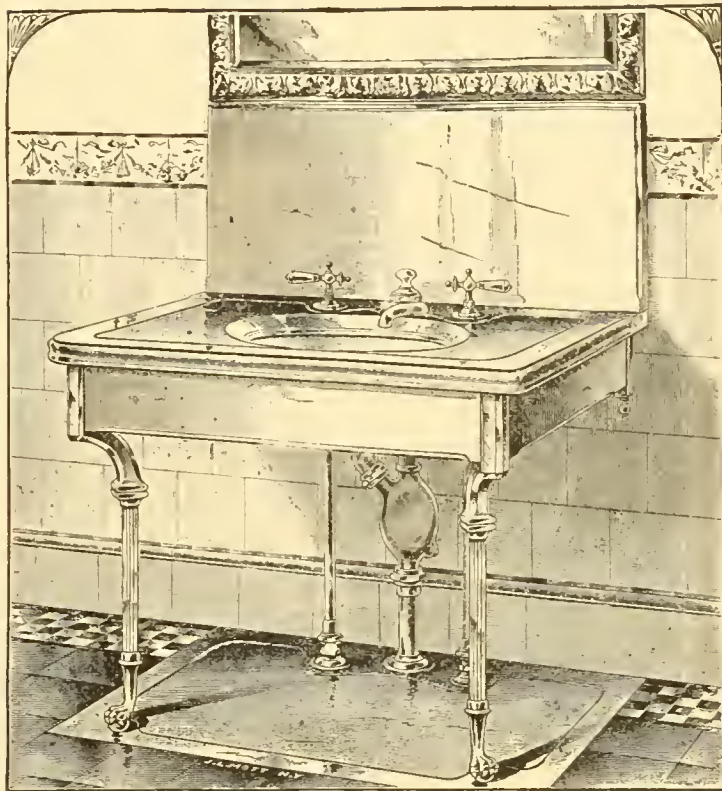
## Mott's Lavatory.

With Patent "Primus" Combination  
Supply & Waste and Patent  
Brass Legs.

It will be seen that in this Lavatory there are no protruding Faucets; that the cold and hot water can be mixed before passing into the basin; and that there is but little brass-work above the slab. The Patent Brass Legs afford a firm support and, being recessed, are not in the way.

Manufacturers of  
FINE SANITARY APPLIANCES;  
STOVES, RANGES,  
HOT WATER & STEAM HEATERS

Illustrated Price List mailed on application.



Copyright, 1883, by THE J. L. MOTT IRON WORKS.

MOTT'S OPEN LAVATORY.





MASSACHUSETTS.

ESTABLISHED 1839.

---

RUSSELL & ERWIN MFG. CO.,

*New Britain, Conn.*

43, 45 & 47 CHAMBERS ST., NEW YORK.

---

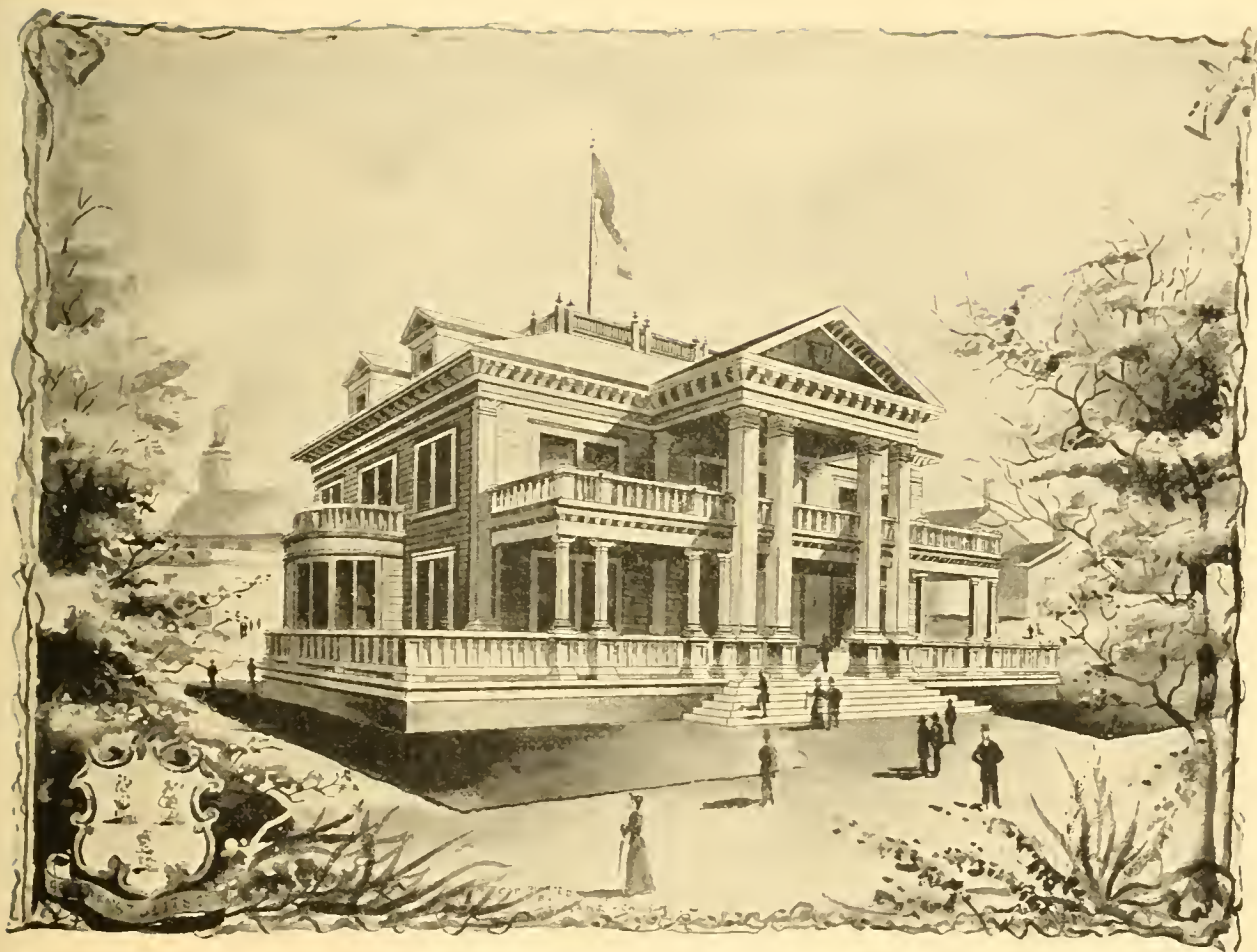
Manufacturers of

HARDWARE and TOOLS

FOR EXPORT.

---

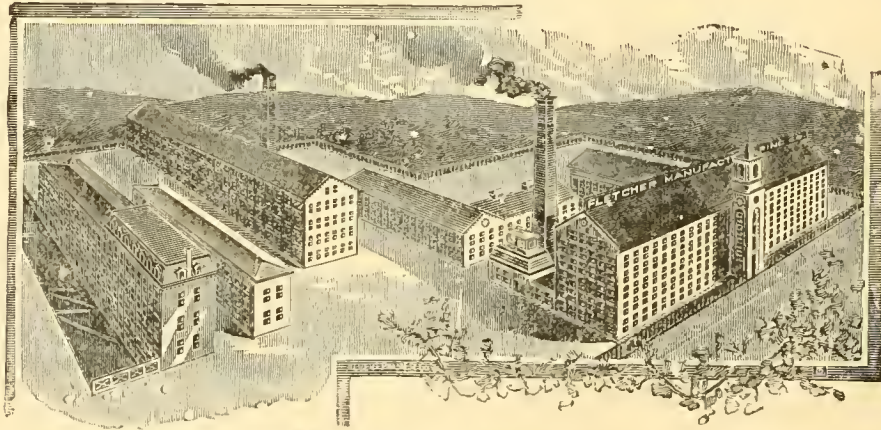
— Complete Illustrated Catalogues. —



CONNECTICUT.

# FLETCHER MANUFACTURING Co.

Providence, R. I., U. S. A.



Manufacturers of

**SHOE & CORSET LACES,  
WICKS FOR OIL LAMPS & STOVES,  
FUSEE FOR SECAR LIGHTERS,**

Office and Salesrooms,

**18 & 20 THOMAS STREET, NEW YORK.**

W. B. FLETCHER, Selling Agent.



RHODE ISLAND.

# AMOSKEAG MFG. CO.

TICKINGS,

DENIMS,

GINGHAMS,

BAGS,

## A F C

THREE STARS,

DRESS GINGHAMS,

TEAZLE DOWN,

SHIRRED EFFECTS,

FANCY WEAVES.

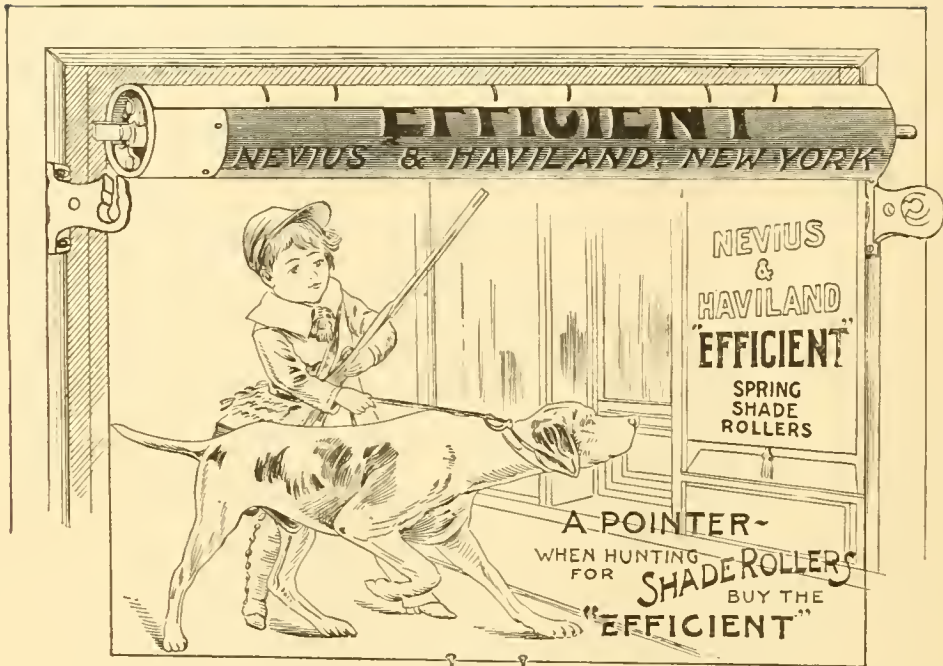
# NOYES, BAUSHER & GERRISH,

19 & 21 THOMAS STREET, NEW YORK.



MAINE.

**NOT OLD ENOUGH** to have forgotten that it takes wire and good workmanship to make a satisfactory Shade Roller.



**BUT OLD ENOUGH** to have established a reputation throughout America as the manufacturers of the best Shade Roller.

A WORD TO THE WISE IS "EFFICIENT."

Highest Award—Columbian Exposition, Chicago, 1893.

**NEVIUS & HAVILAND, 420 & 422 Broome St., N. Y.**

**Manufacturers "EFFICIENT" Spring Shade Rollers.**

Send for Catalogue "H."





VERMONT.

ESTABLISHED 1863.

**JOHN A. GIFFORD,**

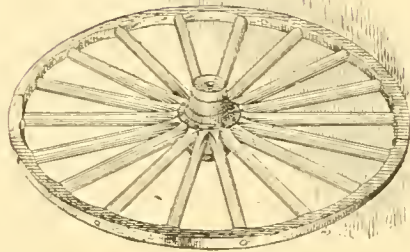
14 MURRAY ST., AND 17 PARK PLACE, NEW YORK.  
MANUFACTURER AND DEALER.

**GOODS**

FOR

**WAGONS,**

For EXPORT.



**GOODS**

FOR

**CARRIAGES,**

For EXPORT.

The Celebrated  
**“Bissel”**  
Carpet Sweepers

are to be found on sale in all sections of the  
civilized world.

**EXPORT Department:**  
103 Chambers St., New York.

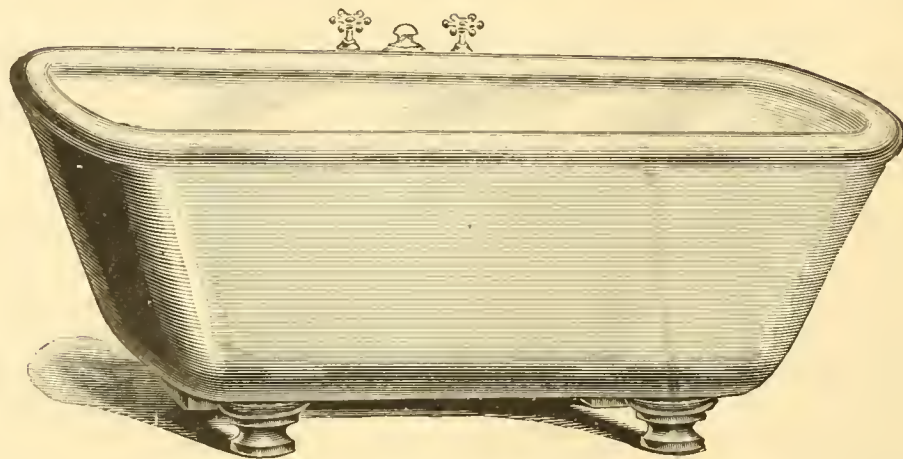
**BORDEN & LOVELL,**  
70 & 71 WEST ST., N. Y.  
American  
**CUT NAILS AND SPIKES**  
AND  
Borden Mining Co.'s  
George's Creek  
**CUMBERLAND COAL**

---



ILLINOIS.

# PORCELAIN BATHS.

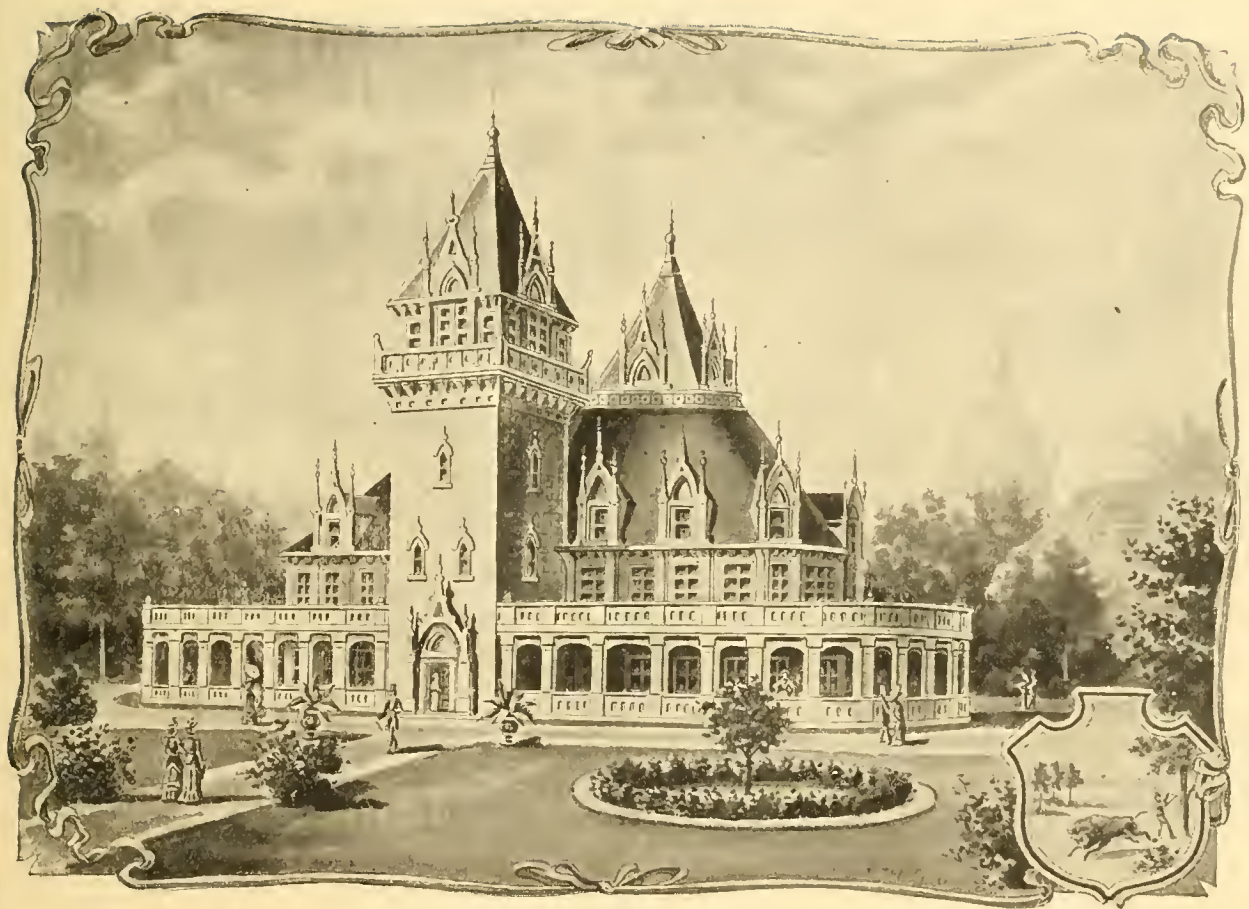


MINTON'S TILES For Floors and Walls—  
Glazed and Unglazed.

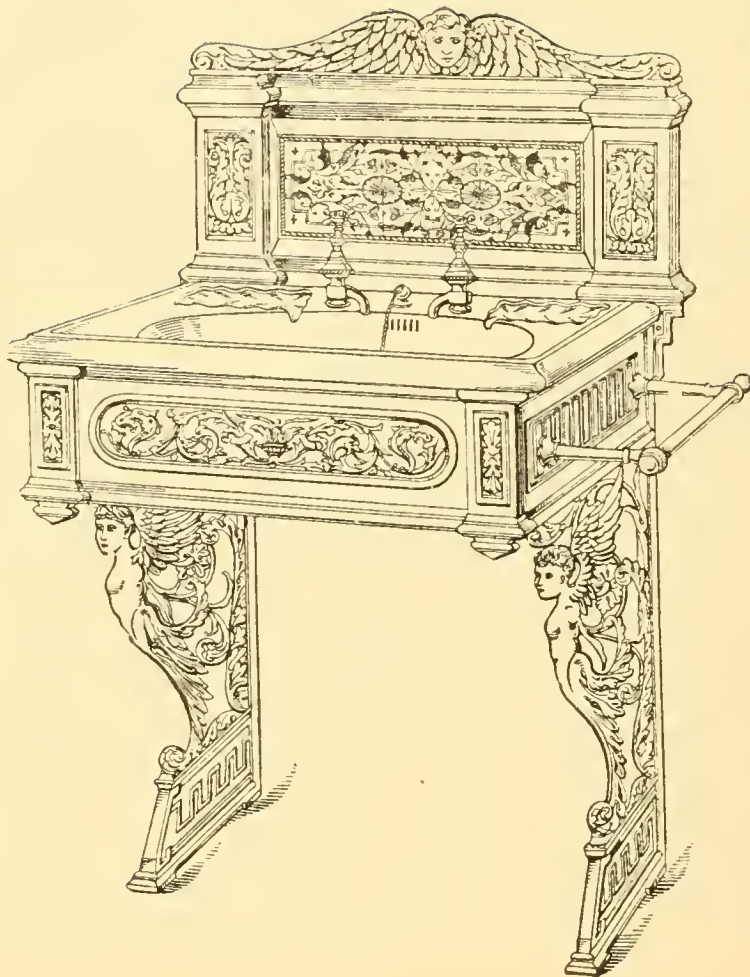
## PLUMBERS' MATERIALS.

Illustrated Catalogue on application.

**MILLER & COATES, 279 PEARL ST., N. Y.**



INDIANA.



**E. ASPINALL,**

**98 & 100**

**BEEKMAN STREET**

**NEW YORK.**

---

Porcelain Baths,

Lavatories,

Water Closets,

Wash Tubs,

Urinals, Etc., Etc.

**SANITARY EARTHENWARE.**



OHIO.

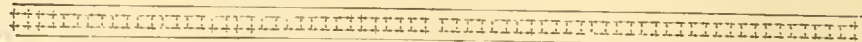
57

# PETERS & CALHOUN CO.,

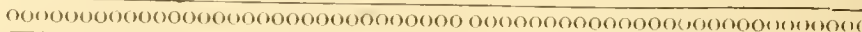
MANUFACTURERS FOR THE

— **EXPORT TRADE** —

— OF —



**HARNESS**



*Riding Saddles and Bridles,*

*Whips, Collars, Hames, &c.*

33 WARREN STREET,

*Cor. Church Street*

*NEW YORK, U. S. A.*

Orders received through any first-class **Commission House.**



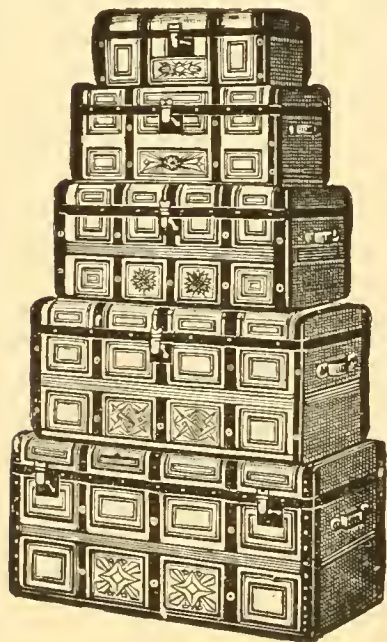


MICHIGAN.

# HEADLEY & FARMER Co

Manufacturers of

## **TRUNKS,** Bags and Valises **FOR EXPORT.**



Catalogues furnished on Application.

---

**388 BROADWAY, NEW YORK.**

**Factories: NEWARK, NEW JERSEY.**



COPYRIGHTED BY J. MANK & CO. CHI.  
1895.

WISCONSIN.

TEFFT, WELLER & CO.,

326-328-330 Broadway,

NEW YORK.

---

Broken Lots of

AMERICAN COTTONS

FOR EXPORT.



MINNESOTA.

# JAMES W. COOKE & CO.

Commission Merchants.

## COLORED COTTONS

Suitable for **EXPORT.**

48 LEONARD STREET, - NEW YORK.  
239 CHESTNUT ST., - - PHILADELPHIA.

UNITED STATES NET & TWINE CO.

**Fish Netting,**



**Twines, Lines, etc**

316 BROADWAY, NEW YORK.

**SHELDON'S STANDARD**

**TRADE PUBLICATIONS**

54 & 56 FRANKLIN ST.,

NEW YORK.



IOWA.

65

# **COTTONS FOR EXPORT.**

**Bleached Muslins**

—AND—

**Fancy Percales.**

**ASK FOR THE HOMESTEAD BRAND.**

**MARTIN I. COOLEY, 100 & 102 Worth St.**

---

## **SHELDON'S REPORTS.**

**Manufacturing Notes, Market Reports,**

**Arrivals and General Business Changes.**





NEBRASKA.

**V. HENRY ROTHSCHILD & CO.**

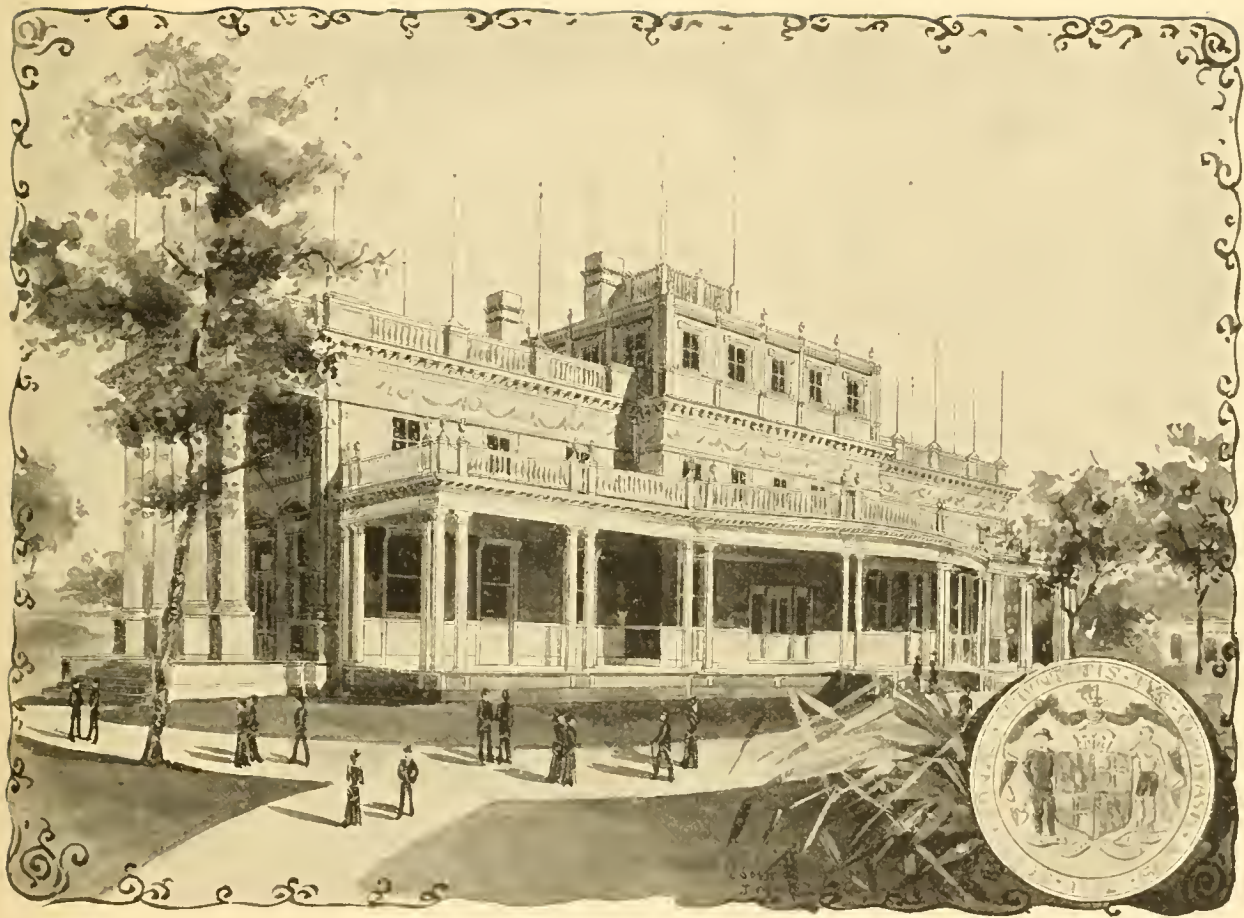
**39-45 LEONARD ST., NEW YORK.**

---

The Celebrated

**SWIFT RIVER COTTON FABRICS**

**FOR HOME & EXPORT TRADE.**



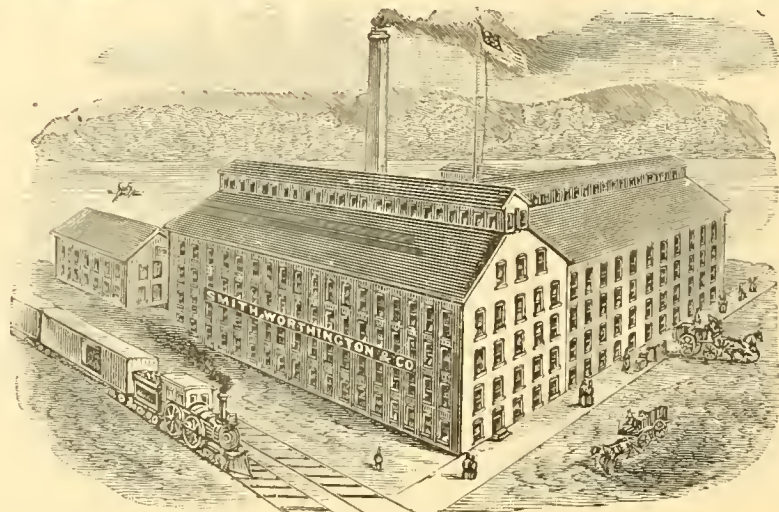
MARYLAND.

— ESTABLISHED 1794. —

**SMITH, WORTHINGTON & CO.,**

**Manufacturers for EXPORT.**

**SADDLERY and HARNESS**



**Factory: HARTFORD, CONN.**

**Salesroom: 40 WARREN ST., NEW YORK.**



VIRGINIA.

JOHN FARNUM & CO.,

235 Chestnut St., Philadelphia.

**CONESTOGO COTTONS**

Colored and Brown.

BERKSHIRE GINGHAMS.

---

JOY, LANGDON & Co.,

108 WORTH ST., NEW YORK.

**HAMILTON PRINTS, DRILLS**

**And OTHER COTTONS**

**For EXPORT.**



WEST VIRGINIA.

# CATLIN & CO.

216 CHURCH ST., NEW YORK.  
15 CHAUNCEY ST., BOSTON.

## COTTON EXPORT SPECIALTIES

### ATLANTIC COTTON MILLS,

Standard Sheetings,  
BROWN & BLEACHED.

ELLERTON CANTON FLANNELS,  
BOTH BROWN & BLEACHED.

### LEWISTON MILLS,

Turkey Red Damasks,  
Cottonades, Colored Flannels &  
L. C. A. Osnaburgs.

AVON MFG. CO., Crochet Quilts.

BOYLSTON MILLS, Terry Towels.

### McADEN MILLS,

30 in. Round Thread  
BLUE CHECKS & STRIPES.

30 in. Double Cable  
BLUE CHECKS & STRIPES.

Hosiery and Underwear.

# M. WEIL,

46 Leonard Street,  
NEW YORK.

Selling Agent for the

Tallassée Falls Mtg. Co.

The Lane Mills,

Lynchburg Cotton Mills.

## DUCK, DRILLS,

## OSNABURGS, SHEETINGS,

## TWINES, YARNS, ETC.

# FOR EXPORT.





LOUISIANA.

# Buyers of American Cottons for Foreign Markets

who desire

**DETAILED INFORMATION as to BRANDS, AGENTS, &c.**

can procure

## Sheldon's Buyers' Reference Book,

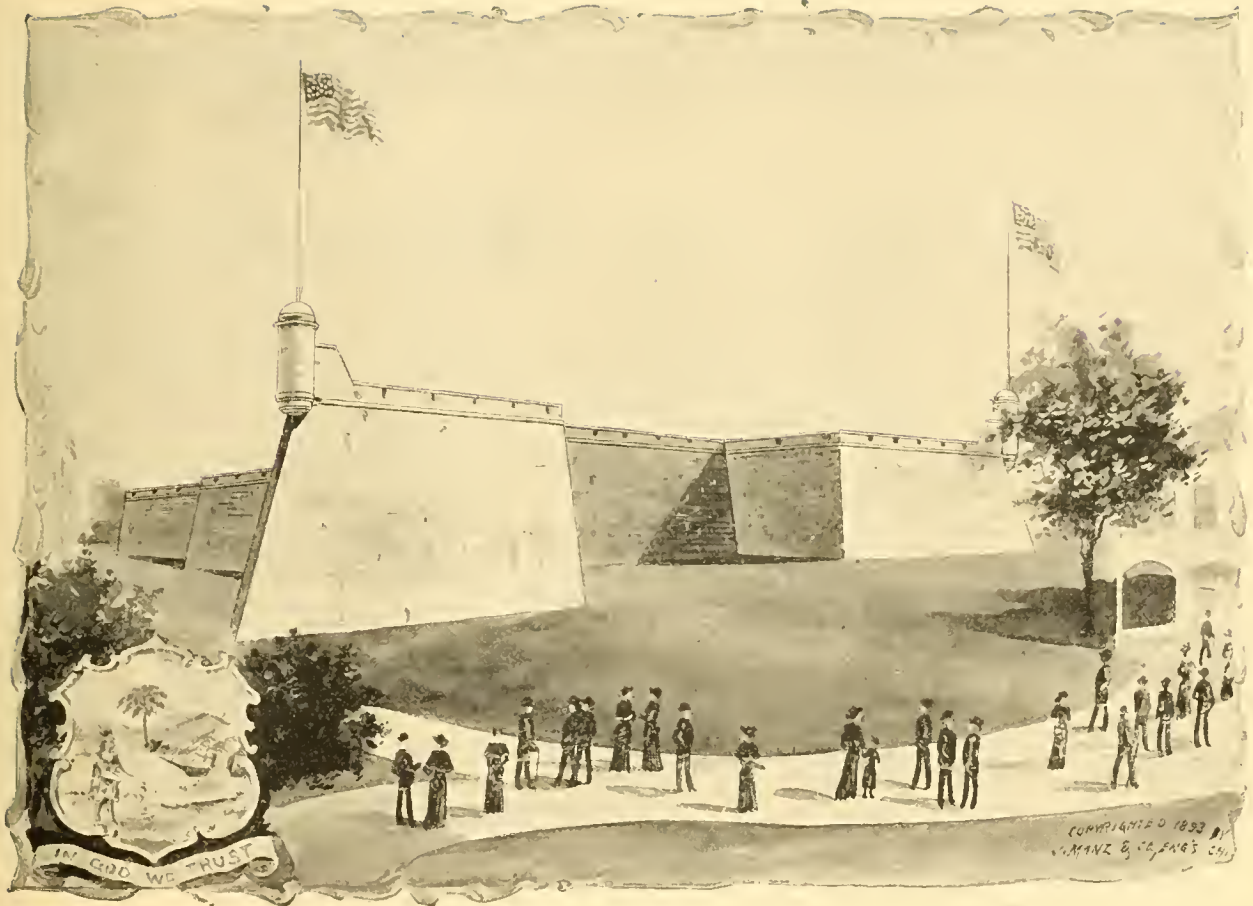
(A work of over 500 pages)

Furnished in connection with

**WEEKLY REPORTS & MONTHLY DRY GOODS PRICE LIST.**

---

**J. D. Sheldon & Co., Publishers, 54 Franklin St. N. Y.**



FLORIDA.

**ANDREW McLEAN & CO.,**

**460 BROOME ST.**

**CRINOLINE LININGS,**

**MOSQUITO NETTING,**

**Buckrams, Etc.**



TEXAS.

**BERNHEIMER & WALTER,**

**51 & 53 WHITE ST.**

**BEAR MILL BRAND OF COTTONS  
FOR EXPORT.**



ARKANSAS.

81

# MARLIN

RIFLES are the simplest, having fewest parts, and consequently a less complicated mechanism, as all the parts act directly on each other and not by means of connecting links, etc. Therefore they are less liable to get out of order.

The **MARLIN RIFLES** have receivers of solid steel, with solid top, and eject at the side, consequently they do not pitch the shells out into the shooter's eyes, compelling him to remove the rifle from the shoulder at every shot. In case of "hang-fires" or defective cartridges, the powder does not blow out into the shooter's eyes, injuring them. Twigs, leaves, rain or snow do not fall through the top and clog the action.

**Lightest,  
Strongest,  
Simplest.**



**Safest,  
Easiest  
working.**

Every **MARLIN RIFLE** is fitted with a **SAFETY**, so it is impossible to explode the cartridge before the action is completely locked.

These rifles are also the only repeaters with solid top receivers, therefore: They are the only **ABSOLUTELY SAFE REPEATERS**.

Write for catalogues or information to

**THE MARLIN FIRE ARMS CO.,**

NEW HAVEN, CONN.

MADE IN ALL CALIBRES.

# RIFLES

New York Agents, **SCHOVERLING, DALY & GALES, 302 BROADWAY.**





KANSAS.

**CHARLES C. TYLER,**

80 Franklin St., New York.

Manufacturer of

**CANDLE WICKING**

all qualities

**EXPRESSLY for EXPORT.**

**HENRY C. KELLEY,**

548 PEARL ST., NEW YORK.

Manufacturer of

**ROPE and TWINE**

in every variety made from

COTTON, FLAX, HEMP, JUTE, MANILA & SISAL,

**FOR FOREIGN MARKETS.**

**SPECIALTIES:** Clothes Lines, Sash Cords,

Wick, Mops, Seine Twines, etc.

---

**THOMAS MARTIN,**

326 Canal Street, New York.

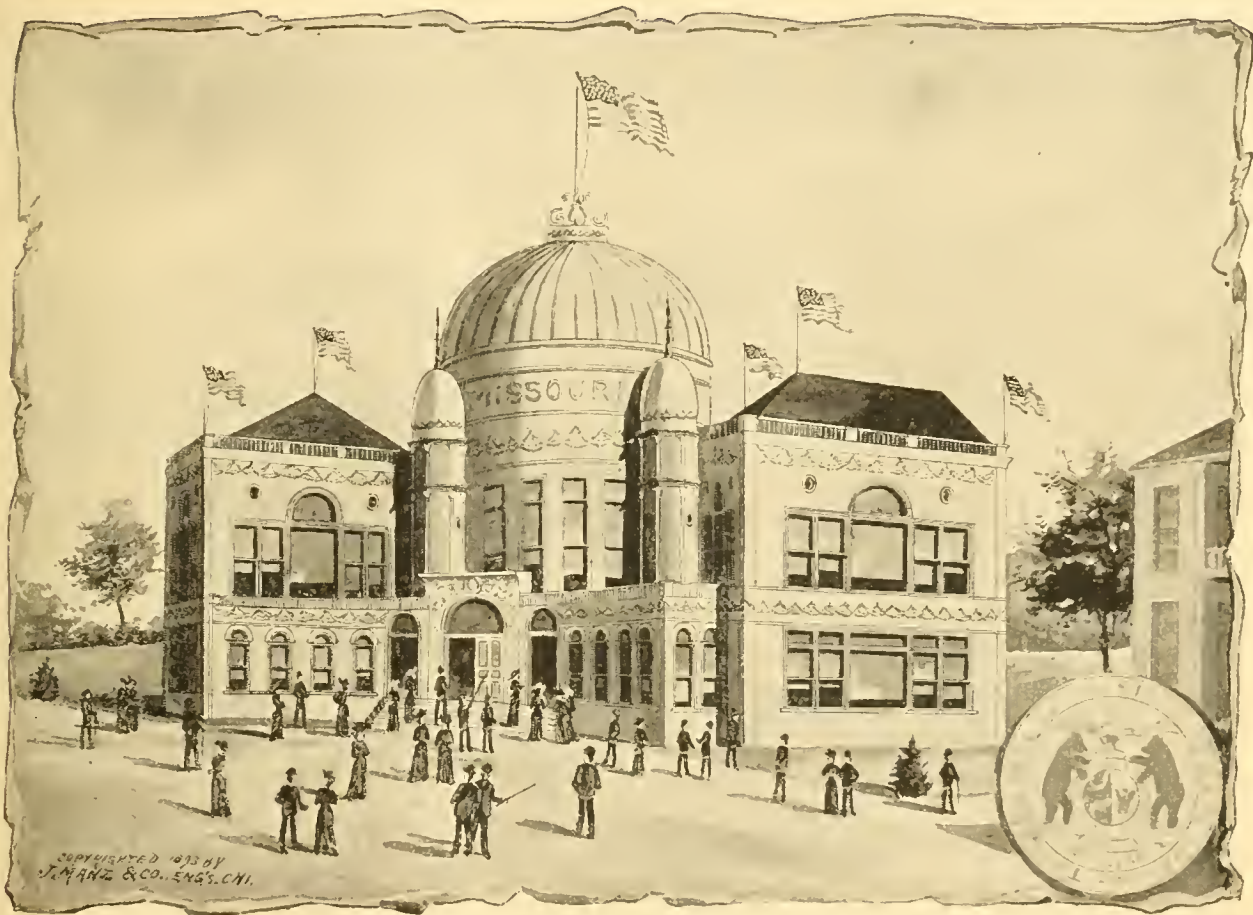
**MANUFACTURER AND DEALER.**

**Tents, Flags, Awnings, Tarpaulins, etc. etc.**

**Awning Stripes, Ducks, etc.**

**SPECIAL TENTS FOR R. R. CONTRACTORS.**

The awnings on the New York State Building (World's Fair) were furnished by Thos. Martin.



COPYRIGHTED 1893 BY  
J. MANZ & CO., ENGS. CHI.

MISSOURI.

**Jacob S. Bernheimer & Bro.,**

**31 & 33 White Street,  
NEW YORK.**

---

Specialties in **COTTON GOODS**  
**FOR EXPORT.**

---

Sheldon's Export Trade

**New Issue 1894-95,**

will give you a list of **BUYERS FOR FOREIGN MARKETS.**



KENTUCKY.

# LONGMAN & MARTINEZ,

MANUFACTURERS FOR EXPORT.

## "LUZ DIAMANTE" OIL.

## DOMESTIC PAINTS

READY FOR USE.

### OILS, PAINTS & VARNISHES.

Office, 207 PEARL ST., - NEW YORK.

---

## C. R. Bailey,

## Perfumer,

20 CEDAR STREET, NEW YORK.

Perfumery  
Face Powders  
Petroleum Jelly

EXPORT TRADE  
OUR SPECIALTY.

**A. BUSHEE & CO.,** - Attleboro, Mass., U. S. A.  
Manufacturers of Fire Gilt and original Gilt Separable  
Buttons, Studs, Export Combination Sets, etc.,  
also Gilt and Plated Jewelry.

New York Office, 237 BROADWAY, Room 24.

**HORTON, ANCELL & CO.,** Attleboro, Mass., U. S. A.  
Manufacturers of Original Separable Sleeve Buttons,  
Collar Buttons, Studs and Export Combination Sets,  
in Fine Rolled Plate only.

New York Office, 237 BROADWAY, Room 24.

**SHORT, NERNEY & CO.,** Attleboro, Mass., U. S. A.  
Manufacturers of Fine Rolled Gold Plate Vest Chains,  
Separable Buttons, Export Combination Sets, etc.,  
also Rolled Plate Chain Bracelets.

New York Office, 237 BROADWAY, Room 24.



IDAHO.

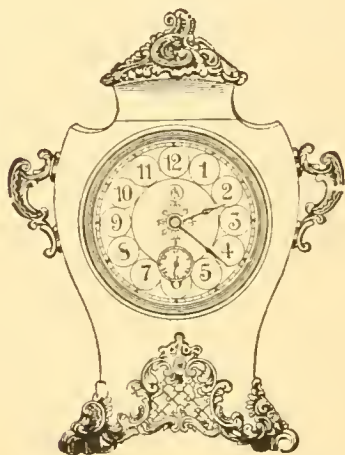
89

The F. Kroeber Clock Co.,

360 Broadway, New York.

"PORCELENE" CLOCKS,

Patented Oct. 3d, 1893,



NOVELTIES FOR EXPORT.



**LOOK!** MAKE A PAYING INVESTMENT.

☞ We offer YOU Special Figures on  
**Optical Goods.**

☞ By investing YOU CAN MAKE from  
**100 to 300 per cent.**

We make Spectacles and Eye Glasses from  
every **KNOWN MATERIAL** suited to the  
purpose.

**SPECTACLES** from 30c. per dozen up.  
**EYE GLASSES** from 50c. per dozen up.

**LARGEST FACTORY.**

**LARGEST ASSORTMENT.**

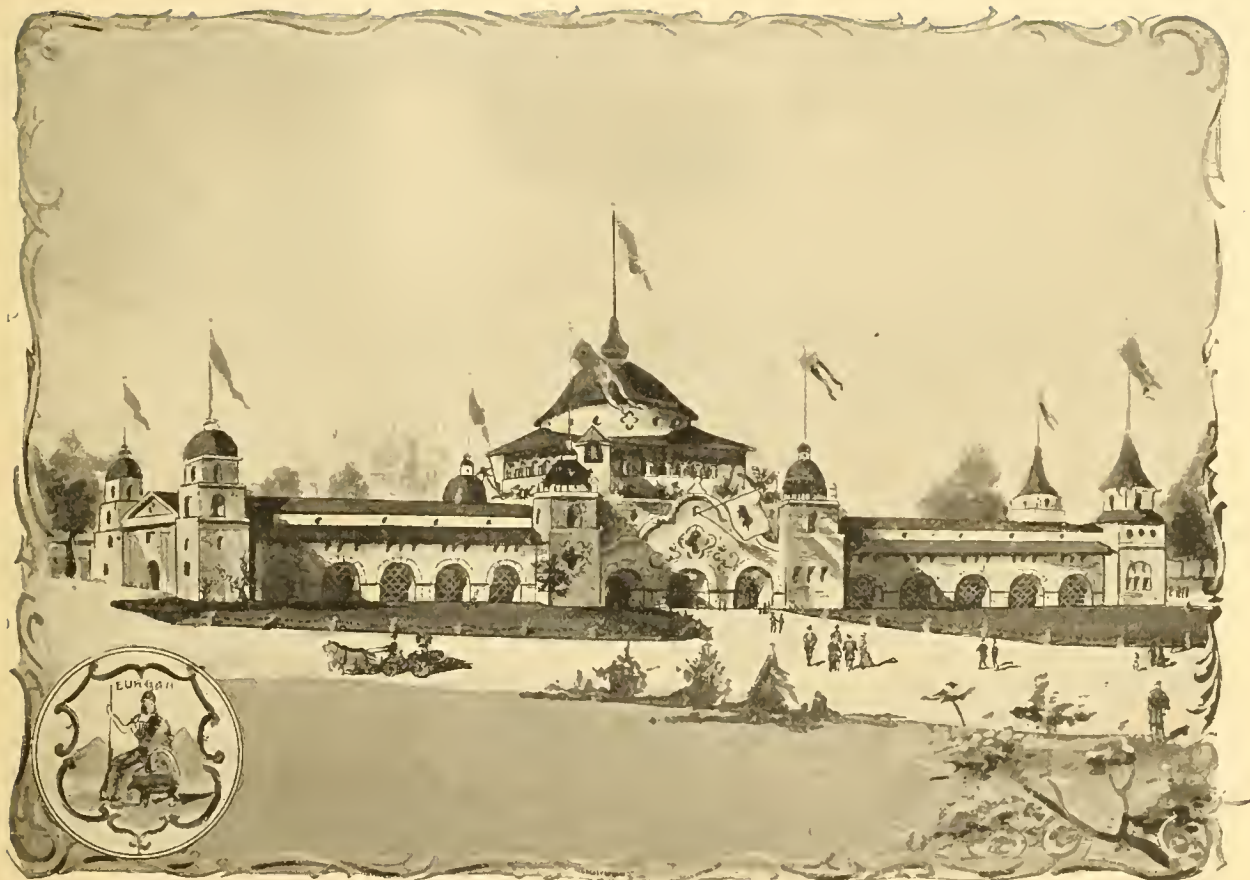
**FACILITIES IMMENSE.**

**Goods for EXPORT a Specialty.**

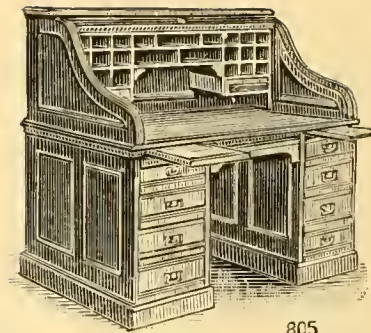
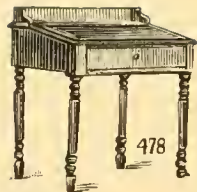
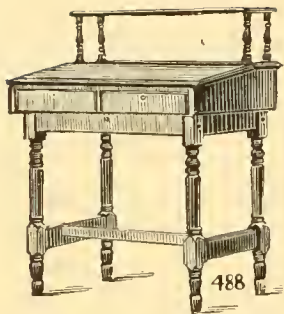
**SPENCER OPTICAL MFG. CO.**

15 MAIDEN LANE, N. Y.





CALIFORNIA.



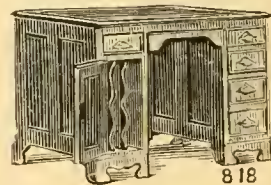
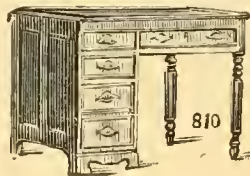
# AMBROSE E. BARNES & BRO.

Manufacturers of

## Desks, Chairs and Office Furniture,

198 & 200 CANAL ST., NEW YORK.

Drop a postal and we will send Catalogue & Price Lists. We can save you money. Send for it.





WASHINGTON.

If in want of a good  
**Warm Air Furnace or Cooking Range**

call upon or address

**RICHARDSON & BOYNTON CO.**

(Manufacturers)

**Nos. 232 & 234 Water St., New York.**

Same address for past 36 years.

**We carry the largest line of goods of this description manufactured  
in the United States.**



COPYRIGHTED 1893 BY  
J. MANZ & CO., ENGRS. CHI.

MONTANA.

**COLOR CARD**

AND

**PRICE LIST**

Sent on application.



Sent on application.

**PRICE LIST**

AND

**COLOR CARD**

# ASPINALL'S **BATH** ENAMEL.

**A SPECIAL ENAMEL FOR**

**Baths, Bath Tubs, Bath Rooms, Hot Water Vessels, etc.**

Resists the action of **BOILING WATER** and **DRY HEAT**,  
and is absolutely non-poisonous.

**E. ASPINALL, 98 & 100 BEEKMAN ST.,**  
**— NEW YORK. —**



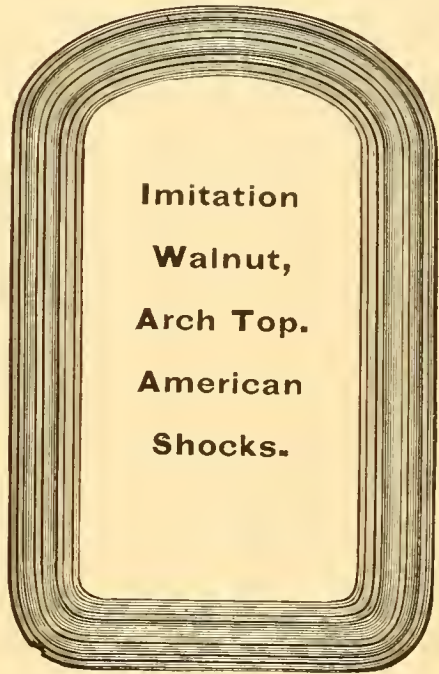
COPYRIGHT 1903  
D. J. ...

COLORADO.

97

# SOUWEINE MANUFACTURING CO.

210 & 212 Canal St., New York.



Imitation  
Walnut,  
Arch Top.  
American  
Shocks.

Manufacturers of

## MIRRORS

For the Jobbing

and

## EXPORT TRADE.

---

SPECIALTIES : HAND & TOILET MIRRORS





WYOMING,

Buyers of Cotton Goods for Export

will find

# **SHELDON'S DRY GOODS PRICE LIST**

**A valuable Source of Reference**

FOR

**BRANDS, WIDTHS AND MARKET QUOTATIONS.**

---

Published Monthly at \$1.00 per year.

---

J. D. Sheldon & Co., 54 Franklin St., New York.



SCULPTURED BY  
J. MANN & CO. ENDS D.C.

NORTH DAKOTA.

# **SHELDON'S MANUFACTURING TRADE**

---

*Classified Lists of Manufacturers of*

**Shirts, Overalls, Skirts, Etc.**

**LADIES' UNDERWEAR, WAISTS, ETC.**

**Children's and Infants' Wear.**

---

**J. D.S HELDON & CO., PUBLISHERS, 54 FRANKLIN ST., N. Y.**



COPYRIGHTED 1893 BY  
J. MANN & CO., ENGRS. N.Y.

SOUTH DAKOTA.

103

# Sheldon's Standard Trade Publications

---

**DRY GOODS PRICE LIST**—26th year.

Classified Lists of Cotton Goods with current Quotations.

**SPECIAL REPORTS**—7th year.

Arrivals, Changes, Market Reports, etc.

**BUYERS' REFERENCE BOOK**—20th year.

Recognized Authority as a Guide to First Hands.

**CITY OFFICES & JOBBING TRADE**—18th year.

**RETAIL TRADE**—11th year.

Classified Lists of the Large Trade of the Country.

**EXPORT TRADE**—16th year.

New York Buyers for Foreign Markets.

**AMERICAN PRODUCTS**—1st year.

**J. D. SHELDON & CO., PUBLISHERS, 54 FRANKLIN ST., N. Y.**

## INDEX TO CLASSIFICATION.

Arms.....	106	Mirrors.....	109
Amunition.....	106	Mosquito Netting.....	109
Bags.....	111	Mosquito Canopies.....	109
Bleached Cottons.....	106	Nails.....	110
Brown Cottons.....	106	Optical Goods.....	110
Carpet Sweepers.....	107	Oils.....	110
Carriages.....	107	Paints.....	110
Carriage Materials.....	107	Perfumery.....	110
Coal.....	107	Plumbers' Supplies.....	110
Clocks.....	107	Plumbers' Materials.....	110
Colored Cottons.....	107	Prints.....	110
Cottons Batts.....	107	Printed Cottons.....	110
Cotton Yarns.....	107	Ranges.....	111
Drills.....	108	Saddlery.....	109
Duck.....	108	Segar Fuse.....	110
Enamels.....	108	Shoe Laces.....	111
Eye Glasses.....	111	Shade Rollers.....	110
Fish Lines.....	108	Shoe Machinery.....	110
Fish Netting.....	108	Spectacles.....	111
Fireplaces.....	108	Spikes.....	110
Flags.....	109	Stoves.....	111
Furniture.....	109	Tents.....	111
Ginghams.....	109	Tiles.....	111
Hardware.....	109	Trunks.....	111
Harness.....	109	Twines.....	111
Horse Clothing.....	109	Varnishes.....	111
Jewelry Manufacturers.....	109	Wadding.....	107
Mantels.....	109	White Goods.....	111
Machinery.....	109	Wicks (Lamp and Candle).....	111

# CLASSIFIED HEADINGS.

## ARMS AND AMUNITION.

Schoverling, Daly & Gales..... 302 Broadway  
The Marlin Arms Co.....New Haven, Conn

## BROWN COTTONS.

Bliss, Fabyan & Co. .... 32 Thomas st  
Catlin & Co..... 216 Church st  
Coffin, Altemus & Co ..... 79 Worth st  
Converse, Stanton & Cullen..... 83 Worth st  
Dana, Tucker & Co.....29 Thomas st  
Deering, Milliken & Co .....79 Leonard st  
Dudley, Battelle & Hurd.....53 Worth st  
Wm. Fish, Jr. & Co ..... 60 Leonard st  
F. A. Foster & Co ..... 57 Leonard st  
Garner & Co ..... 10 Worth st  
E. H. Hamilton & Co.....113 Worth st  
B. W. Horton ..... 341 Broadway  
Joy, Langdon & Co..... 108 Worth st  
J. H. Lane & Co ..... 110 Worth st  
Lawrence, Taylor & Co .....109 Worth st  
W. H. Langley & Co..... 78 Worth st  
J. T. Low & Co..... 65 Worth st  
Minot, Hooper & Co ..... 51 Leonard st  
Root, Childs & Co .....23 Thomas st  
O. H. Sampson & Co..... 58 Worth st

Smith, Hogg & Gardner .....117 Worth st  
Tefft, Weller & Co.....326 Broadway  
Townsend & Yale..... 345 Broadway  
Fred'k Viotor & Achelis..... 66 Leonard st  
Wheelwright, Eldredge & Co ..... 61 Worth st  
Whittin & Collins.....112 Worth st  
Whitman & Phelps... .....40 Leonard st  
M. Weil..... 46 Leonard st  
Wilson & Bradbury.....95 Franklin st  
Woodward, Baldwin & Co.....43 Worth st  
Joseph W. Woods & Son.....58 Leonard st

## BLEACHED COTTONS.

Bliss, Fabyan & Co.....32 Thomas st  
Catlin & Co..... 216 Church st  
Coffin, Altemus & Co .....79 Worth st  
Converse, Stanton & Cullen..... 83 Worth st  
Martin I. Cooley..... 100 Worth st  
Deering, Milliken & Co..... 79 Leonard st  
Dudley, Battelle & Hurd ..... 53 Worth st  
F. A. Foster & Co.....57 Leonard st  
Garner & Co..... 10 Worth st  
B. W. Horton.....341 Broadway  
Lawrence, Taylor & Co.....109 Worth st  
J. H. Lane & Co.....110 Worth st  
J. T. Low & Co..... 65 Worth st  
Minot, Hooper & Co..... 51 Leonard st



## BLEACHED COTTONS—(continued)

Root, Childs & Co.....	23 Thomas st
Smith, Hogg & Gardner.....	117 Worth st
Tefft, Weller & Co.....	326 Broadway
James Thompson & Co.....	112 Franklin st
Townsend & Yale.....	345 Broadway
Whitin & Collins .....	112 Worth st
Wheelwright, Eldredge & Co.....	61 Worth st
Whitman & Phelps.....	40 Leonard st
Wilson & Bradbury.....	95 Franklin st
Woodward, Baldwin & Co.....	43 Worth st
Joseph W. Woods & Son.....	58 Leonard st

## CARRIAGES.

W. H. Gray.....	20 Wooster st
-----------------	---------------

## CARRIAGE MATERIALS.

John A. Gifford .....	14 Murray st
-----------------------	--------------

## CARPET SWEEPERS.

Bissell Carpet Sweeper Co.....	103 Chambers st
--------------------------------	-----------------

## COAL.

Borden & Lovell .....	70 West st
-----------------------	------------

## CLOCKS.

F. Kroeber Clock Co.....	360 Broadway
--------------------------	--------------

## COTTON BATTS AND WADDING.

E. H. Hamilton & Co.....	113 Worth st
Henry C. Kelley.....	548 Pearl st
Joseph A. Seffarlen.....	421 Market st., Phila., Pa
C. C. Tyler.....	80 Franklin st
Union Wadding Co.....	49 Leonard st

## COTTON YARNS.

Buckingham & Paulson.....	83 Leonard st
E. H. Hamilton & Co.....	113 Worth st
Henry C. Kelley.....	548 Pearl st
J. H. Lane & Co.....	110 Worth st
Joseph A. Seffarlen.....	421 Market st., Phila., Pa
G. K. Sheridan & Co.....	68 Thomas st
C. C. Tyler.....	80 Franklin st
M. Weil.....	46 Leonard st

## COLORED COTTONS.

Aberfoyle Mfg. Co.....	99 Franklin st
Joshua L. Baily & Co.....	19 Thomas st
Jacob S. Bernheimer & Bro.....	33 White st
Bernheimer & Walter.....	51 White st
Bliss, Fabyan & Co.....	32 Thomas st
M. Brown, Sons & Co.....	236 Church st
Burton Bros & Co.....	334 Broadway
Catlin & Co.....	216 Church st
Wm. Campbell & Co.....	52 White st
John G. Carruth & Co.....	61 Leonard st
James W. Cooke & Co.....	48 Leonard st
Danforth Clark & Co.....	46 White st
Dana, Tucker & Co.....	29 Thomas st
Dudley, Battelle & Hurd.....	53 Worth st
John Farnum & Co.....	235 Chestnut st., Phila, Pa
Wm. Fish Jr & Co.....	60 Leonard st
R. Granlees & Son.....	8 Thomas st
E. H. Hamilton & Co.....	113 Worth st
Wm. E. Hooper & Sons.....	74 Broad st
John Williams Mfg. Co.....	274 Church st

## COLORED COTTONS—(continued)

Joy, Langdon & Co.	108	Worth st
A. D. Juilliard & Co.	68	Worth st
J. H. Lane & Co.	110	Worth st
Leshner, Whitman & Co.	502	Broadway
Jas. Long, Bro. & Co.	58	Leonard st
Jacob Loewenthal & Sons.	151	Greene st
Thomas Martin	326	Canal st
Noyes, Bausher & Gerrish	19	Thomas st
Nevins & Co.	212	Church st
Root, Childs & Co.	23	Thomas st
V. Henry Rothschild & Co.	43	Leonard st
O. H. Sampson & Co.	58	Worth st
Smith, Hogg & Gardner	117	Worth st
James Talcott	110	Franklin st
Tefft, Weller & Co.	326	Broadway
Townsend & Yale	345	Broadway
J. Spencer Turner	109	Duane st
Fred'k Vietor & Achelis	66	Leonard st
Whitman & Phelps	40	Leonard st
Woodward, Baldwin & Co.	43	Worth st
Joseph W. Woods & Son	58	Leonard st

## DRILLS AND DUCK.

Bliss Fabyan & Co.	32	Thomas st
Jacob S, Bernheimer & Bro.	33	White st
Bernheimer & Walter	51	White st
Catlin & Co.	216	Church st
Dana, Tucker & Co.	29	Thomas st
Dudley, Battelle & Hurd	53	Worth st
Wm. E. Hooper & Sons	74	Broad st
Joy, Langdon & Co.	108	Worth st

J. H. Lane & Co	110	Worth st
W. H. Langley & Co.	78	Worth st
Jacob Loewenthal & Sons	151	Greene st
Thomas Martin	326	Canal st
Minot, Hooper & Co.	51	Leonard st
Nevins & Co.	212	Church st
Root, Childs & Co.	23	Thomas st
G. K. Sheridan & Co.	68	Thomas st
O. H. Sampson & Co.	58	Worth st
Wm. Simpson, Sons & Co.	318	Broadway
Smith, Hogg & Gardner	117	Worth st
Townsend & Yale	345	Broadway
J. Spencer Turner	109	Duane st
M. Weil	46	Leonard st
Wheelwright Eldredge & Co.	61	Worth st
Whitman & Phelps	40	Leonard st
Wilson & Bradbury	95	Franklin st
Woodward, Baldwin & Co.	43	Worth st

## ENAMELS.

E. Aspinall	98	Beekman st
F. O. Pierce & Co.	170	Fulton st

## FISH LINES AND NETTING.

American Net & Twine Co.	199	Fulton st
United States Net & Twine Co.	316	Broadway

## FIREPLACES.

Wm. H. Jackson & Co.	860	Broadway
The J. L. Mott Iron Works	90	Beekman st

### FLAGS.

DeGrau, Aymar & Co.....	34 South st
F. A. Foster & Co .....	57 Leonard st
J. H. Lane & Co.....	110 Worth st
Thomas Martin .....	326 Canal st
Joseph W. Woods & Son.....	58 Leonard st

### FURNITURE.

Ambrose E. Barnes & Bro.....	198 Canal st
------------------------------	--------------

### GINGHAMS.

Aberfoyle Mfg. Co.....	99 Franklin st
Amoskeag Mfg. Co.....	19 Thomas st
Bliss, Fabyan & Co.....	32 Thomas st
Joshua L. Baily & Co.....	21 Thomas st
John G. Carruth & Co.....	61 Leonard st
Wm. Campbell & Co.....	52 White st
Coffin, Altemus & Co.....	79 Worth st
James. W. Cooke & Co.....	48 Leonard st
Converse, Stanton & Cullen.....	83 Worth st
Dana, Tucker & Co .....	29 Thomas st
Dudley, Battelle & Hurd.....	53 Worth st
John Farnum & Co. ....	235 Chestnut st., Phila
R. Granlees & Sons.....	8 Thomas st
A. D. Juilliard & Co .....	66 Worth st
James Long, Bro. & Co.. ..	58 Leonard st
Smith, Hogg & Gardner.....	117 Worth st
Fred'k Vietor & Achelis.....	66 Leonard st
Wilson & Bradbury.....	95 Franklin st
Woodward, Baldwin & Co.....	43 Worth st
Clarence Whitman & Co.....	39 Leonard st

### HARDWARE.

Russell & Erwin Mfg. Co.....	45 Chambers st
------------------------------	----------------

### HARNESS AND SADDLERY.

W. H. Gray .....	20 Wooster st
Peters & Calhoun Co.....	33 Warren st
Smith, Worthington & Co .....	40 Warren st

### HORSE CLOTHING.

Wm. Ayres & Sons.....	325 Broadway
L. C. Chase & Co .....	338 Broadway
W. H. Gray.....	20 Wooster st
Peters & Calhoun Co.....	33 Warren st
Smith, Worthington & Co.....	40 Warren st

### JEWELRY MANUFACTURERS.

A. Bushee & Co.....	Attleboro, Mass
A. Bushee & Co.....	237 Broadway
Horton, Angell & Co.....	Attleboro, Mass
Horton, Angell & Co .....	237 Broadway
Short Nerney & Co....	Attleboro, Mass
Short Nerney & Co.....	237 Broadway

### MANTELS.

Wm. H. Jackson & Co.....	860 Broadway
--------------------------	--------------

### MACHINERY.

Edwin B. Stimpson & Son.....	31 Spruce st
------------------------------	--------------

### MIRRORS.

Souweine Mfg. Co .....	210 Canal st
------------------------	--------------

### MOSQUITO NETTING.

Andrew McLean & Co.....	460 Broome st
-------------------------	---------------

### MOSQUITO CANOPIES.

John S. Gage... ..	119 Franklin st
--------------------	-----------------

## NAILS AND SPIKES.

Borden &amp; Lovell..... 70 West st

## OILS.

F. W. Devoe &amp; C, T. Raynolds Co.....101 Fulton st

Longman &amp; Martinez ..... 207 Pearl st

## OPTICAL GOODS.

Spencer Optical Mfg. Co.....15 Maiden Lane

## PAINTS.

Billings, King &amp; Co..... 438 Pearl st

F. W. Devoe &amp; C. T. Raynolds Co.....101 Fulton st

Longman &amp; Martinez..... 207 Pearl st

F. O. Pierce &amp; Co.....170 Fulton st

## PERFUMERY.

C. R. Bailey ..... 20 Cedar st

F. Hoyt &amp; Co.....338 Broadway

## PLUMBERS SUPPLIES &amp; MATERIALS.

E. Aspinall.....98 Beekman st

Haydenville Mfg. Co.....73 Beekman st

Miller &amp; Coates.....279 Pearl st

The J. L. Mott Iron Works.....90 Beekman st

## PRINTS.

Bliss, Fabyan &amp; Co.....32 Thomas st

Coffin, Altemus &amp; Co.....79 Worth st

Garner &amp; Co.....10 Worth st

Joy, Langdon &amp; Co.....108 Worth st

Lawrence, Taylor &amp; Co.....109 Worth st

J. H. Lane &amp; Co.....110 Worth st

O. H. Sampson &amp; Co.....58 Worth st

Wm. Simpson, Sons &amp; Co.....318 Broadway

Wheelwright, Eldredge &amp; Co.....61 Worth st

Joseph Woods &amp; Son.....58 Leonard st

## PRINTED COTTONS.

Bernheimer &amp; Walter.....51 White st

Jacob S. Bernheimer &amp; Bro.....33 White st

Martin I. Cooley.....100 Worth st

Creighton &amp; Burch.....10 Thomas st

James W. Cooke &amp; Co.....48 Leonard st

F. A. Foster &amp; Co.....57 Leonard st

Garner &amp; Co.....10 Worth st

Gilbert Mfg. Co.....514 Broadway

E. Milius &amp; Bro.....107 Franklin st

V. Henry Rothschild &amp; Co.....43 Leonard st

Tefft, Weller &amp; Co.....326 Broadway

Clarence Whitman &amp; Co.....39 Leonard st

Joseph W. Woods &amp; Son.....58 Leonard st

## SEGAR FUSE.

Fletcher Mfg. Co.....18 Thomas st

## SHADE ROLLERS.

Nevius &amp; Haviland.....420 Broome st

## SHOE MACHINERY.

Edwin B. Stimpson &amp; Son.....31 Spruce st

## SHOE LACES.

S. A. Castle & Co.	50 Leonard st
C. E. Conover Co.	101 Franklin st
Fletcher Mfg. Co.	18 Thomas st
Nealon, Goodrich & Dresser	273 Church st
Noyes, Smith & Co.	63 Leonard st
Porter Bros. & Co.	78 Worth st
Edwin B. Stimpson & Son	31 Spruce st

## SPECTACLES AND EYE GLASSES.

Spencer Optical Mfg. Co.	15 Maiden Lane
--------------------------	----------------

## STOVES AND RANGES.

Richardson & Boynton Co.	232 Water st
The J. L. Mott Iron Works	90 Beekman st

## TENTS.

Thomas Martin	326 Canal st
---------------	--------------

## TILES.

Wm. H. Jackson & Co.	860 Broadway
Miller & Coates	279 Pearl st
The J. L. Mott Iron Works	90 Beekman st

## TOOLS.

Russell & Erwin Mfg. Co.	45 Chambers st
--------------------------	----------------

## TRUNKS AND BAGS.

Crouch & Fitzgerald	688 Broadway
Josiah Cummings, Son & Co.	67 Kingston st., Boston
Headley & Farmer Co.	388 Broadway

## TWINES.

American Net & Twine Co.	199 Fulton st
Buckingham & Paulson	83 Leonard st
Fletcher Mfg. Co.	18 Thomas st
E. H. Hamilton & Co.	113 Worth st
Wm. E. Hooper & Sons	74 Broad st
Henry C. Kelley	548 Pearl st
Joseph A. Seffarlen	421 Market st., Phila., Pa.
C. C. Tyler	80 Franklin st
United States Net & Twine Co.	316 Broadway
M. Weil	46 Leonard st

## VARNISHES.

Billings, King & Co.	438 Pearl st
F. W. Devoe & C. T. Reynolds Co.	101 Fulton st
F. O. Pierce & Co.	170 Fulton st
Longman & Martinez	207 Pearl st

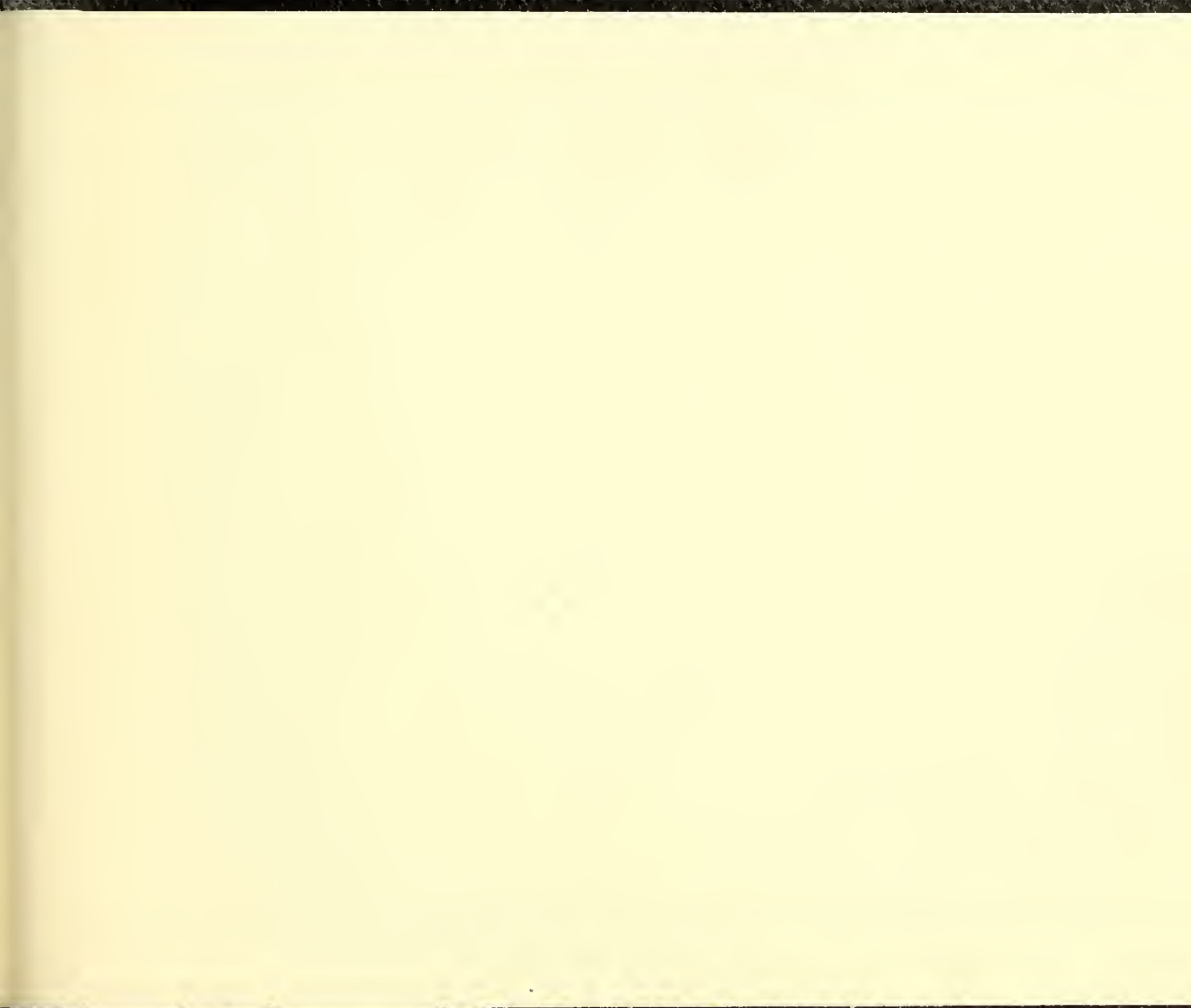
## WICKS. (Lamp and Candle)

E. H. Hamilton & Co.	113 Worth st
Fletcher Mfg. Co.	18 Thomas st
Henry C. Kelley	548 Pearl st
Joseph A. Seffarlen	421 Market st., Phila., Pa
C. C. Tyler	80 Franklin st

## WHITE GOODS.

Creighton & Burch	10 Thomas st
Gilbert Mfg. Co.	514 Broadway
Clarence Whitman & Co.	39 Leonard st

H 182 84







HECKMAN  
BINDERY INC.



SEP 84

N. MANCHESTER,  
INDIANA 46962



LIBRARY OF CONGRESS



0 007 299 048 1

